



CDSOA Carolinas' Fleet South River Cruise

South River, NC

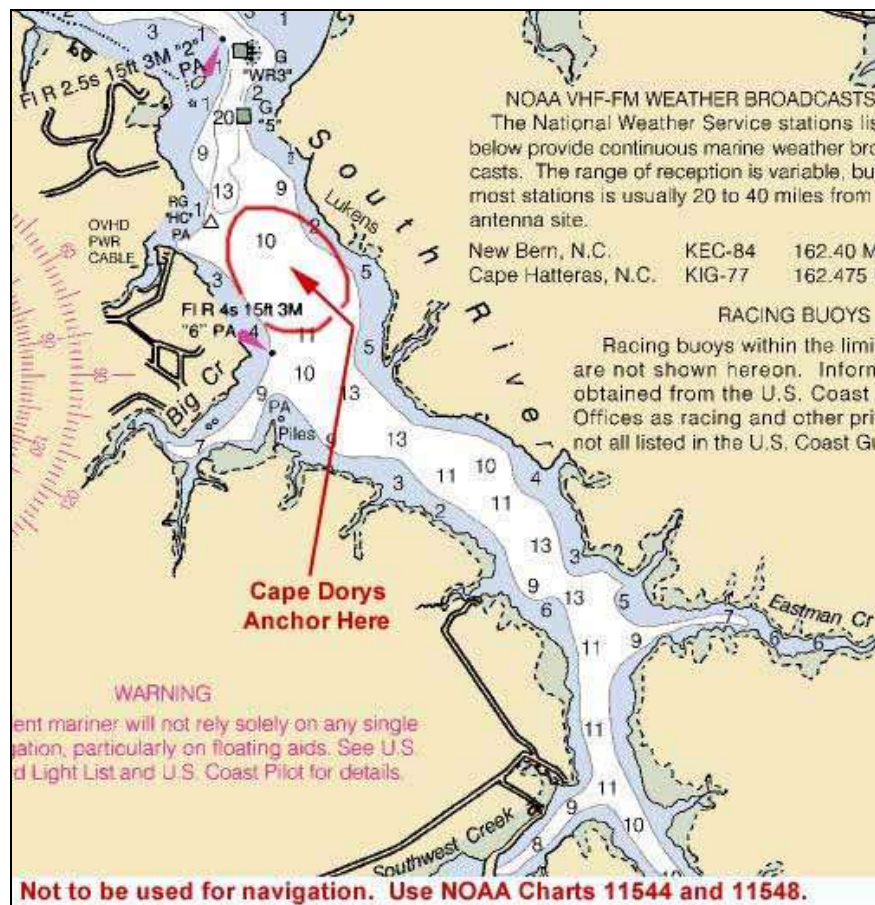
April 30-May 2, 2010

Questions? Contact Event Organizer Lou Ostendorff Ph: 919-906-2418; ostendorff@bellsouth.net

Ahoy Cape Dory Sailors & Friends!!

While you are thinking about this years' upcoming cruises, think also about South River, not so far from Oriental, NC, for the weekend of April 30 thru May 2, 2010. All Cape Dory owners, wannabes, members, non-members, and families are welcome to attend. The Cruise Capt. expects a stellar turnout for the first cruise of the year. We have been there several times, and our actual raft-up location may vary, so first arrivals get their pick and the others can huddle up close or choose other places within shouting and signaling distance. For those who will be arriving on Friday, the 30th, I'll bet that a call on channel 16 & follow up communications on channel 72 will find you a Cape Dory or two out there or on the way.

**Fleet communications will be on VHF Ch. 16 and 72.
Please monitor these channels during the cruise.
Hail the "Cape Dory Fleet".**



Saturday will probably be the most popular outbound travel day and I would think leaving Oriental #1 by noon would be best, giving a chance for some sailing across the river, up the river, or whatever on a leisurely trip to the anchorage. Again, channels 16 & 72 will help you get together with fellow travelers.

Float Plan:

You can cruise to South River at your own pace, arriving either Friday evening or Saturday daylight hours.

The entrance to the river is a Flashing Green "1", at 34°59.37'N, 76°35.39'W, aligning the channel with Flashing Red "2", at 34°58.89'N, 76°35.05'W, and can be found on **NOAA Chart 11544**. The entrance is a little tricky in that there is a narrow segment between markers #1 and #2, and you can go aground if you're not in the middle of the channel. As you negotiate between these two markers, look astern frequently to assure you're lined up within the channel. You then enter a curved segment to the right, fairly well marked, but with more reported markers than on the chart. Under less than optimum conditions, my advice is to douse the canvas and motor in after passing #1. We intend to raft up, weather permitting, between Green Day Marker #5 and Flashing Red #6, where the river widens somewhat with depths between 9-11'. We have, in past years, traveled farther upriver and dropped the hook near the confluence of two creeks feeding the River. Stay in radio contact to find out where the Fleet will finally reside.

The raft-up will last as long as is feasible, with drinks, cocktails, and snacks the later order of the day before supper time. We'll break up the raft before the evening hours. Sunday, it will be Captain's Choice on choosing a departure time.

The South River Cruise has been considered the 'Shakedown Cruise' for a number of years, to encourage everyone to work on their Cape Dorys and get them in top condition for the other planned events. For those having special tools, such as Loos Gages for rigging adjustments, please bring them along. Additionally, we decided at the Annual Meeting to get into 'gunkholing' this year. That requires that you have a working dinghy to get around in. I am asking all fleet members to bring their dinghies and outboards to the cruise so they can be worked on, if necessary, and brought into useable condition.

As always, navigation is the responsibility of the Captain, as well as the safety of vessel and crew. The information contained herein is intended as a guide, and not for explicit navigational purposes.

Your Cruise Captain plans to submit a report to the Secretary, so be prepared for photography duty and/or note-taking duty, should it be assigned to you.

LINK to a chart 11544 including South River; **NOT TO BE USED FOR NAVIGATION:**

<http://www.charts.noaa.gov/OnLineViewer/11544.shtml>

Have a great trip and we'll see you on the water!

Fair Winds,

Low Ostendorff
Cruise Captain

Email: ostendorff@bellsouth.net
Address: Raleigh, NC 27615
Phone: (919) 906-2418