



**CDSOA Great Lakes Fleet**  
**Lake Michigan Float-in**  
**St. Joseph, MI**  
**July 8-10, 2011**  
**PLEASE RSVP BY "JULY 1<sup>ST</sup>"!**

Questions? Contact Event Organizer **David VanDenburgh** Ph: 269-556-0090; Email address: [ariel.cd36\\*NOSPAM\\*@gmail.com](mailto:ariel.cd36*NOSPAM*@gmail.com)  
Or Fleet Captain **Mike Ritenour** Ph: 716-870-9454; Email address: [rit\\*NOSPAM\\*@seascan.com](mailto:rit*NOSPAM*@seascan.com)

Our **Western** Sail-In will be held at St. Joseph, MI, July 8-10  
(<http://www.arielcanvasandsails.com/wordpress/?p=190>)

### Where?:

St. Joseph, Michigan, at the southeastern end of Lake Michigan, approximately 50nm east of Chicago. Transient slips will be available at the newly renovated **West Basin Municipal Marina** at the usual state rates (approximately 1.00/foot). The park-like marina is adjacent to Tiscornia Beach and the North Pier. Downtown St. Joseph, which has several shops and great places to eat, is a short walk or a shuttle ride away.

It's hard not to be biased about your hometown, but St. Joseph really is a great town – and it's getting better.



The St. Joseph River channel is well marked and dredged to a depth of approximately 20 ft. Visitors arriving by boat can find transient slips at either [West Basin Municipal Marina](#) or [Harbor Isle](#), a private marina located upriver. West Basin, located on the north side of the channel, has several well-maintained transient slips, is easily accessed, and provides foot access to Tiscornia Beach. The marina is located next to the [St. Joseph River Yacht Club](#), a beautiful, historic brick building on the water's edge, and a railroad swing bridge. The entrance is clearly marked and the marina has good depth for moderate-draft vessels. Major renovations in fall 2009 and early spring 2010 resulted in updated docks and a new marina office. Harbormaster Jimmy Carolla is very friendly and accommodating. Visitors should contact the harbormaster on VHF Ch. 9 for slip assignment. As always, specify your vessel type, length, and draft.



New office and haul-out well at West Basin

Harbor Isle was also undergoing renovation in 2010 to make way for a condo and marina complex. Since most of the area likely will be rebuilt, little maintenance has been performed on the existing docks. Visitors will need to pass through three bridges to reach Harbor Isle – one railroad swing bridge and two bascule bridges. Water depth in the area of Harbor Isle gets very shallow and is not well marked. It would be wise to stay near the slips on the south side of the river.

Access to the downtown on foot from West Basin Municipal and Harbor Isle requires crossing the river, but West Basin has a courtesy van available. Additionally, slip renters may use four bicycles provided by West Basin Municipal marina. A shuttle also

operates between West Basin and downtown during certain hours. If you do walk into town, plan on a 10-15 minute walk from either location.

If you don't mind a potentially bumpy ride and boat traffic, boats may tie up along the seawall on the south side of the channel just past the railroad swing bridge. From there it is a short walk up the bluff to the downtown – and it's free. Even better, you just might have a front row seat to a concert in the nearby bandshell. Skippers tying up along the seawall should use fender boards or several over-sized fenders to keep the boat off of the corrugated steel. The

seawall will be especially uncomfortable during periods of sustained winds from the W to NW, as waves tend to roll down the St. Joseph channel.

Anchoring in the inner basin just upriver from the first bascule bridge is possible, but St. Joseph is a working harbor and large ships deposit loads of gravel nearby. Bottom conditions in the area are unknown to me, but I would expect them to be muddy and potentially foul.

Boaters arriving in St. Joseph would do well to check out [Wolf's Marine](#), Southwest Michigan's largest marine store. Wolf's stocks an extensive inventory and has an on-site rigging shop.

Downtown St. Joseph is a great mix of natural beauty and quaint city streets lined by shops of all kinds. There are several great places to eat – [Silver Beach Pizza](#), Pump House Grill, Port 412, Tim's Too, Kilwin's ice cream – and several fun shops. The newest attraction opened in 2010, the St. Joseph Carousel.

Located in a brand new pavilion, the carousel comes close to recreating an old-time St. Joseph carousel that closed sometime in the 70s, I believe. And nearby Silver Beach is one of the most attractive beaches on Lake Michigan.



The channel during a fall storm.

## Getting There:

**By land** - From the west, take I-94 East from Chicago and exit at Red Arrow Hwy (North). Drive north into town. From the south, take US31 North to M-63. Follow M-63 into St. Joseph. From the north, take 196 (US31) south into town.

**By train** - Amtrak has a station in St. Joseph (SJM), making travel by train an easy option. Visit the Amtrak website for information and reservations.

**By sea** - Sailing in from the north is an 8-hour sail from Holland with fair winds. Ports farther north may require a couple days of sailing. We'd love to have boats from as far north as possible!

**Sailing from Chicago** is an 8-10 hr sail, depending upon wind.

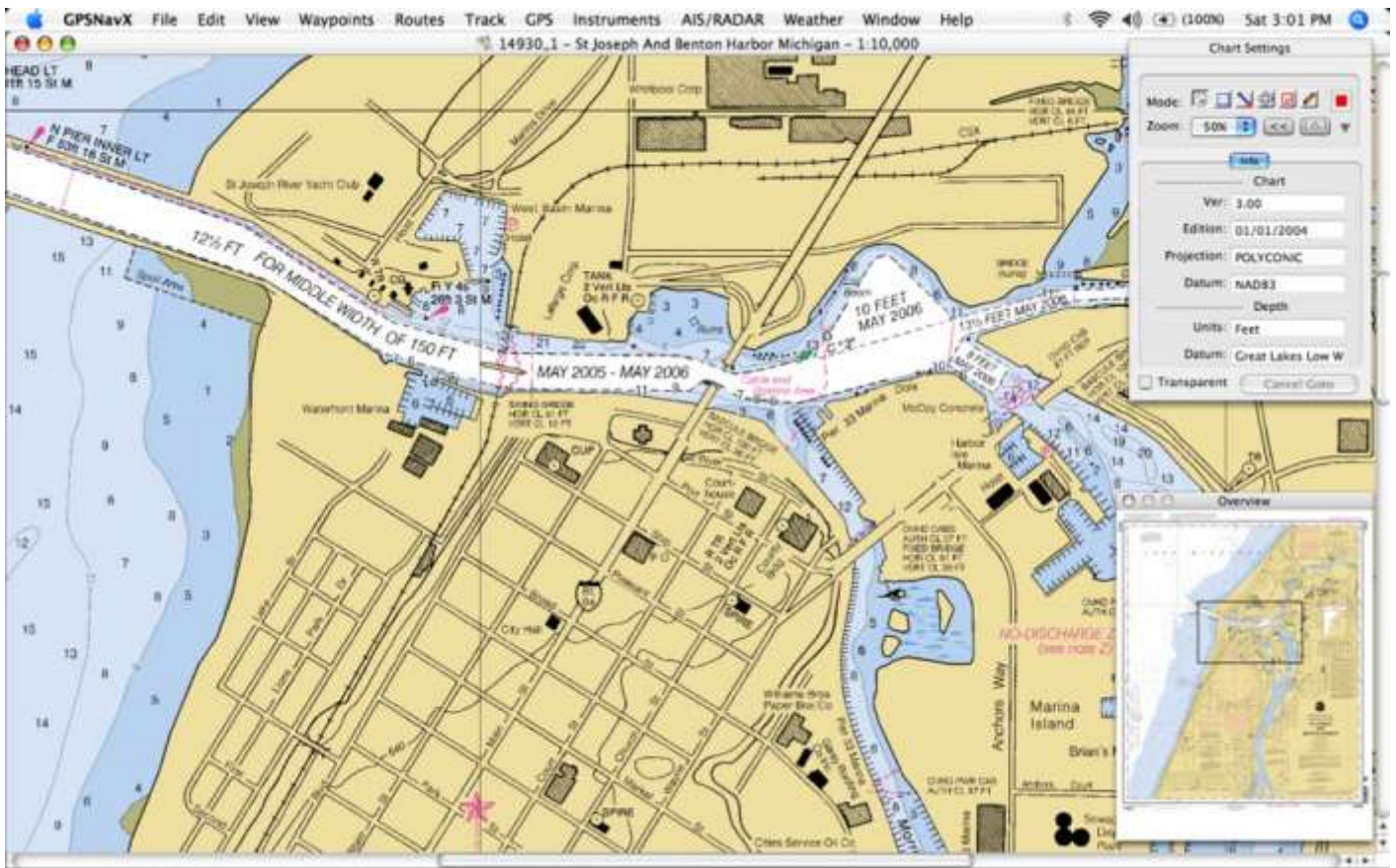
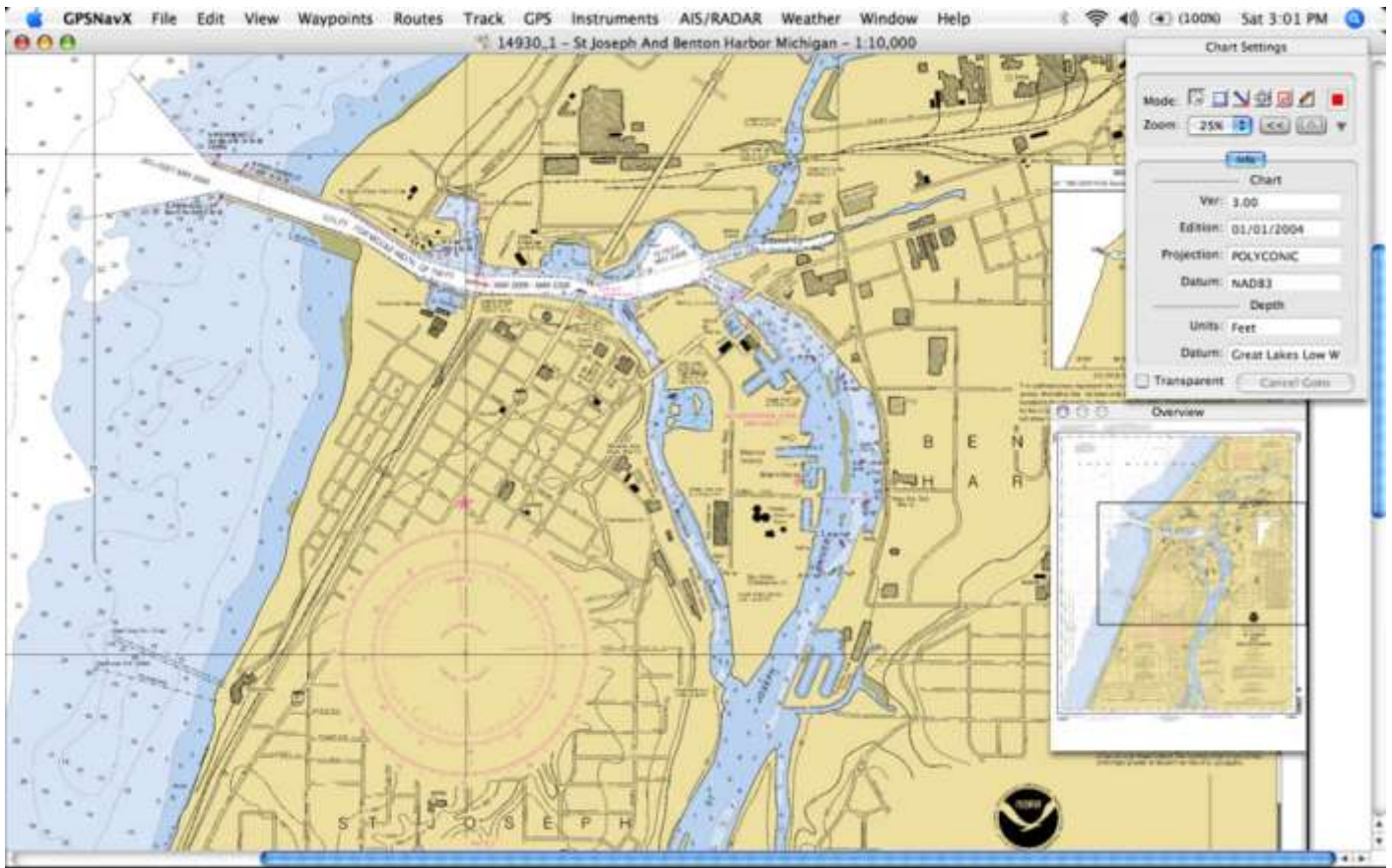
## Accommodations:

**On land** - There are a number of hotels in the area for those who arrive by train or car. The Boulevard Inn & Bistro on the bluff offers luxury suites with great views of Lake Michigan. Silver Beach Hotel is also on the bluff and in the heart of the downtown section. There are other hotels south of town that are a bit more economical (and likely to have more availability). St. Joseph is a very popular summer destination, so hotels fill fast. Participants who want to come early or stay late and make a vacation of the weekend might find a vacation home rental in town or on the beach.

- **The Boulevard Inn & Bistro** – 269-983-6600. 521 Lake Boulevard Ave., St. Joseph, MI, 49085
- **Silver Beach Hotel** – 269-983-7341. 100 Main St., St. Joseph, MI, 49085
- **Baymont Inn and Suites** (south of town) – 269-428-9111. 2601 W. Marquette Woods Rd., Stevensville, MI, 49127
- **Comfort Suites** (south of town) – 269-428-4888. 2633 W. Marquette Woods Rd., Stevensville, MI, 49127

**On the water** - West Basin Municipal Marina is located at 273 Marina Drive (Latitude/Longitude 42°07'N 86°30'W), and has 94 total slips, 74 seasonal and 20 transient, ranging from 30' to 50' in length. West Basin Marina has a convenient location just inside the pierheads (no bridges), one block from the public beach at Tiscornia Park and next to the St. Joseph River Yacht Club. To make a reservation log on to < <http://www.midnrreservations.com/> > or call 1-800-447-2757. < <http://www.sjcity.com/inside.php?a=PG:77> >.





**Not for navigation. Use NOAA charts # 14905 and 14930.**

## Events (tentative):

**Friday evening dinner** - either a barbecue on the dock, a dinner at the St. Joseph River Yacht Club or a restaurant downtown.

**Saturday** - Brunch in town and then a group sail out on the lake; trip to Southwest Michigan's largest marine store, Wolf's Marine; dinner and prizes.

**Sunday** - Coffee and snacks; walk around downtown; departure.

## Contacts:

St. Joseph is the home port of the *Ariel* crew, Dave and David VanDenburgh. Contact them with any questions or to RSVP!

Any questions regarding this event? Please contact Event Organizer **David VanDenburgh** at 269-556-0090 or ariel.cd36\*NOSPAM\*@gmail.com.

**Don't forget to remove *"\*NOSPAM\*"* from email address before clicking on Send!**



Hope to see you there!

---

***All owners of both Cape Dory and Robinhood power and sailboats, CDSOA members and non-members, are welcome to attend.***

***All captains are responsible for their own navigation and the safety of their vessels and crew.***

***Use NOAA Charts 14905 and 14930.***

---

## Web Resources:

The VanDenburgh's Lake Michigan Cape Dory web site: <http://www.arielcanvasandsails.com/wordpress/>

West Basin Municipal Marina: <http://www.sjcity.com/inside.php?a=PG:77>

Harbor Isle: [http://www.harborislemarina.com/Transient\\_Dockage.html](http://www.harborislemarina.com/Transient_Dockage.html)

St. Joseph River Yacht Club: <http://www.sjryc.com/>

Wolf's Marine: <http://www.wolfsmarine.com/>

Silver Beach Pizza: <http://silverbeachpizza.com/>

Michigan Dept. of Natural Resources & Environment (online reservations): <http://www.midnrreservations.com/>