



CDSOA Great Lakes Fleet
Lake Ontario Float-in
Sodus Point, NY
August 5-7, 2011
PLEASE RSVP BY "JULY 15TH"!

Questions? Contact Event Organizer **Bill Mercer** Ph: 315-635-3511; Email address: mercervj*NOSPAM*@verizon.net
Or Fleet Captain **Michael Ritenour** Ph: 716-870-9454; Email address: rit*NOSPAM*@seascan.com

Our Eastern float-in will be held on Sodus Bay, at Sodus Point, N.Y., Lake Ontario.

Sodus Bay is an awesome natural harbor and our venue there is steeped in historic content on beautiful Lake Ontario.

Join us for a great weekend of fun and camaraderie on August 5th, 6th and 7th at the Cape Dory Eastern Great Lakes rendezvous in the scenic (and historic) village of Sodus Point, NY. We look forward to meeting and have fun with these folks too.

This event will be held at the



Sodus Bay Yacht Club



7431 Irwin Street, Sodus Point, NY 14555, ph.: 315-483-9550.

This is a beautiful facility just inside the entrance to Sodus Bay from Lake Ontario. You can see this for yourself if you visit their web site at < www.sodusbayyc.org >.

We will have a welcoming gathering at the Club's bar on Friday around 5 PM and have dinner plans for Saturday evening. Slips and moorings are available at the Club for those of you who are "floating" in. The first night's slips are free for all attendees. Subsequent nights' slips will cost \$30 per night.

Fleet communications will be on VHF Ch. 16 and 78.
Please monitor these channels during the event.
Hail "Cape Dory Fleet" or individual boats.

There are a number of excellent B&Bs in the village and in the surrounding area, but they fill up fast, so if you need overnight accommodations, visit < www.waynecountytourism.com > for a listing and to make your reservation.

There is parking at the Club for those who wish to drive-in and the village offers several very nice restaurants for Friday night dinner and Sunday morning breakfast.

There is a "Wine and Jazz" festival in the nearby village of Wolcott on Saturday.

There will be drawings and prizes for current members of the CDSOA, Inc.

As soon as you decide to attend, please contact me, Bill Mercer, at < mercervjnosspam@verizon.net > (please remove the "*NOSPAM*" before sending the email, or send a "**pm**" from the CD message board to Fleet Captain Mike Ritenour by clicking on the link provided below, so we'll know how many folks will be attending and can make the necessary reservations at the Sodus Bay Yacht Club.

Click the link to "**pm**" Mike Ritenour: <http://www.capedory.org/board/privmsg.php?mode=post&u=2692>

We look forward to meeting everyone and enjoying your company for a great sailing weekend!

Please have your reservations to Bill by the 15th of July.

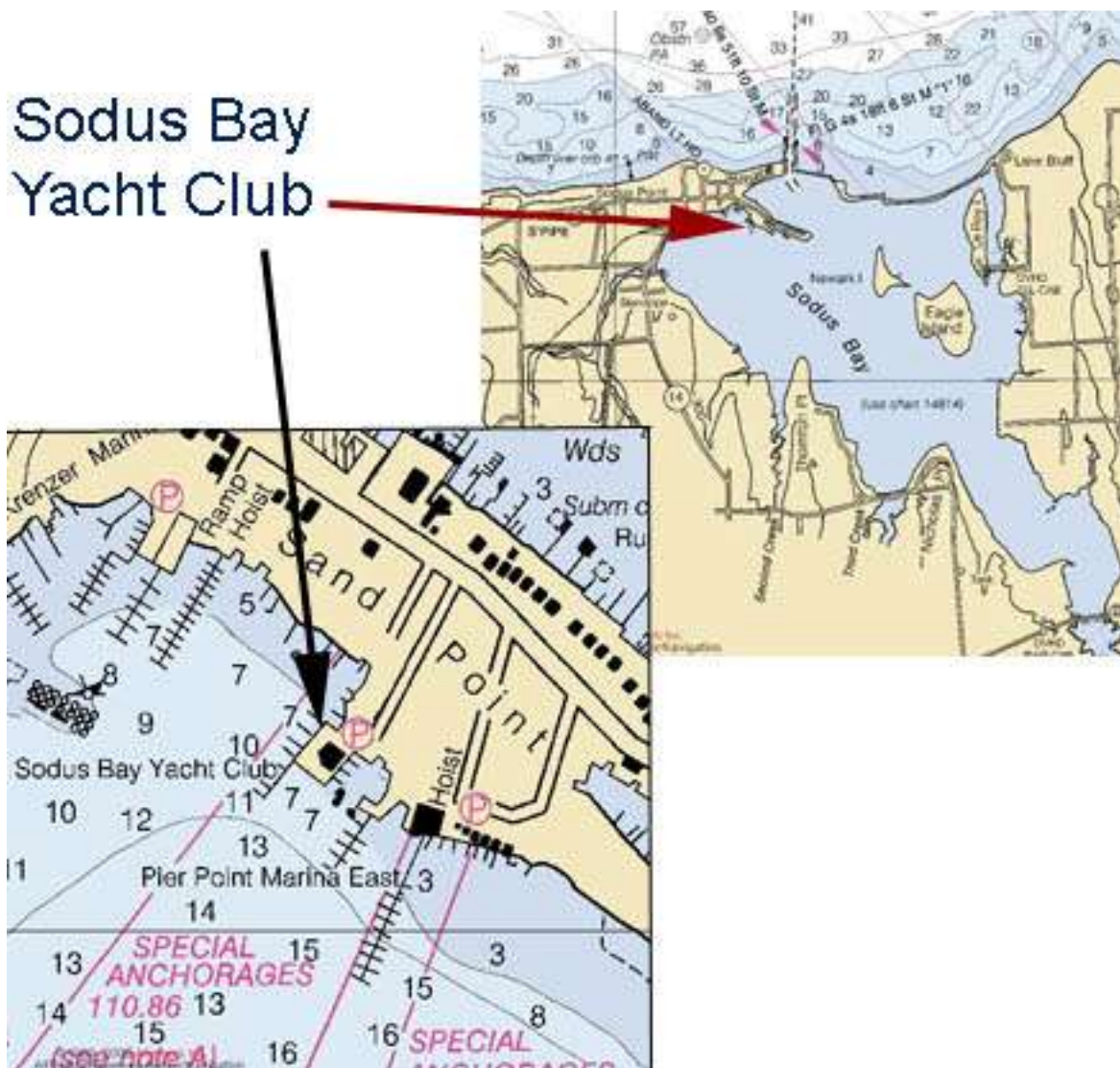
Thanks!!!!

Any questions regarding this event? Please contact Event Organizer **Bill Mercer** at 315-635-3511 or mercerwj*NOSPAM*@verizon.net.

All owners of both Cape Dory and Robinhood power and sailboats, CDSOA members and non-members, are welcome to attend.

All captains are responsible for their own navigation and the safety of their vessels and crew.

Use NOAA Charts 14804 and 14814.



Driving Directions to the Yacht Club:

From the I-90/NY State Thruway:

- TAKE EXIT 42 at (Thruway) mile 327.10, the exit sign says "ROUTE 14, Geneva, Lyons".
- Take the exit and TURN NORTH ON ROUTE 14. Stay on Route 14 all the way into Sodus Point!
- Route 14 ends at Bay Street in Sodus Point. At the stop sign TURN RIGHT ON BAY STREET and drive over the hill and through town. On your right you will see CLOVER STREET.
- TURN RIGHT ONTO CLOVER STREET.
- The parking lot entrance to SBYC IS THE NEXT RIGHT TURN...

From Toronto:

- Take the Queen Elizabeth Way around the lake toward St. Catherine's.
- Take Exit 37 - Route 405 "to USA bridge".
- After going through Customs, watch for the signs - take Route 190 SOUTH.
- You will cross a couple of bridges, watch for the signs - take Route 290 EAST.
- As you skirt the City of Buffalo, watch for the signs for Route 90 EAST, this is also called the NY State THRUWAY.
- You will travel about 30 miles EAST on the Thruway (Rt 90) to get to the Rochester area.
- Look for/take EXIT 46 Route 390 NORTH .
- In 5 to 10 miles, bear right to take EXIT 15, 590 NORTH.
- After another 9 miles or so, watch for/take EXIT 10B, the sign says WEBSTER Route 104 EAST.
- You will cross a high bridge over a long, narrow bay (Irondequoit Bay), then travel approximately 25 miles East on Route 104 through the increasingly smaller towns of Webster, Ontario, and Williamson, to finally enter the town of SODUS. Once you enter Sodus the second stop light on Route 104 will be MAPLE AVENUE.
- Turn LEFT (North) ON MAPLE AVENUE, and go all the way to the stop sign at the end (about three miles).
- TURN RIGHT ONTO LAKE ROAD and travel another five miles or so, directly into the Village of Sodus Point. You will pass through a heavily wooded area outside of town before you come to a stop sign at the intersection of Route 14.
- GO STRAIGHT (Lake Road becomes Bay Street here) drive over the hill and through town. On your right you will see CLOVER STREET.
- TURN RIGHT ONTO CLOVER STREET.
- The parking lot entrance to SBYC IS THE NEXT RIGHT TURN...

From Rochester:

- AT AIRPORT EXIT, TURN RIGHT at traffic light.
- Immediately BEAR RIGHT ONTO ROUTE 390 South.
- After approximately 3 miles BEAR LEFT ONTO EXIT 15, Route 590 North.
- After another 9 miles TAKE EXIT 10B, Webster, Route 104 EAST.
- Continue on Route 104 East which will take you across a high bridge over a long narrow bay (Irondequoit Bay), and will eventually narrow from a 6 lane to a 4 lane highway. You will travel approximately 25 miles East, through the increasingly smaller towns of Webster, Ontario, and Williamson, before entering the town of SODUS. Once you enter Sodus the second stop light on Route 104 will be MAPLE AVENUE.
- Turn LEFT (North) ON MAPLE AVENUE, and go all the way to the stop sign at the end (about three miles).
- TURN RIGHT ONTO LAKE ROAD and travel another five miles or so, directly into the Village of Sodus Point. You will pass through a heavily wooded area outside of town before you come to a stop sign at the intersection of Route 14.
- GO STRAIGHT (Lake Road becomes Bay Street here) drive over the hill and through town. On your right you will see CLOVER STREET.
- TURN RIGHT ONTO CLOVER STREET.
- The parking lot entrance to SBYC IS THE NEXT RIGHT TURN...

From Syracuse:

- From the Airport exit Road, FOLLOW THE SIGNS TO I-81 SOUTH . Take I-81 South for about a mile. Follow the signs for I-90 West (NYS Thruway).
- TAKE EXIT 25A - Interstate 90 (New York State Thruway) WEST.
- From Interstate 90 (NYS Thruway), TAKE EXIT 42 at (Thruway) mile 327.10, the exit sign says "ROUTE 14, Geneva, Lyons".
- Take the exit and TURN NORTH ON ROUTE 14. Stay on Route 14 all the way into Sodus Point!
- Route 14 ends at Bay Street in Sodus Point. At the stop sign TURN RIGHT ON BAY STREET and drive over the hill and through town. On your right you will see CLOVER STREET.
- TURN RIGHT ONTO CLOVER STREET.
- The parking lot entrance to SBYC IS THE NEXT RIGHT TURN...

Area Lodging

<p>Sodus Point Lodge 8528 Greig Street, Sodus Point, NY 14555 Phone: 315-553-2056 Email: soduspointlodge@rochester.rr.com http://www.asoduspointlodge.com</p>	<p>Lakeside Inn B&B 7533 John St., Sodus Point, NY 14555-9606 Phone: 315-483-0206</p>
<p>Carriage House Inn 8375 Wickham Blvd, Sodus Point, NY 14555 Phone: 315-483-2100 or 800-292-2990 Email: cariginn@rochester.rr.com http://www.carriage-house-inn.com</p>	<p>Bonnie Castle Farm B&B PO Box 188, Wolcott, NY 14590 Phone: 315-587-2273 or 800-587-4006</p>
<p>The Cliffs at Sodus Point Bed & Breakfast 7961 Lake Road, Sodus Point, New York 14555 Phone: 315-483-4309 Email: innkeeper@TheCliffsatSodusPoint.com http://www.thecliffsatsoduspoint.com</p>	<p>Bay Street Hotel 7487 Bay St. Ext, Sodus Point, NY 14555 Phone: 315-483-2233</p>
<p>Maxwell Creek Inn 7563 Lake Rd., Sodus, NY 14551 Phone: 315-483-2222 Email: mcinnbnb@worldnet.att.net http://www.maxwellcreekinn-bnb.com</p>	<p>Cottage & Boat Rentals Sodus Point, NY Phone: 315-879-7707 Email: soduspointlodge@rochester.rr.com http://www.sodusbay-lakeontario-cottagerentals.com/</p>
<p>Silver Waters Bed & Breakfast 8420 Bay Street, Sodus Point, NY 14555 Phone: 315-483-8098 or 800-645-2664 Email: innkeeper@silver-waters.com http://www.silver-waters.com</p>	

For more information on lodgings in the Wayne County Area
Wayne County Tourism Office
<http://www.waynecountytourism.com/accomodations.asp>