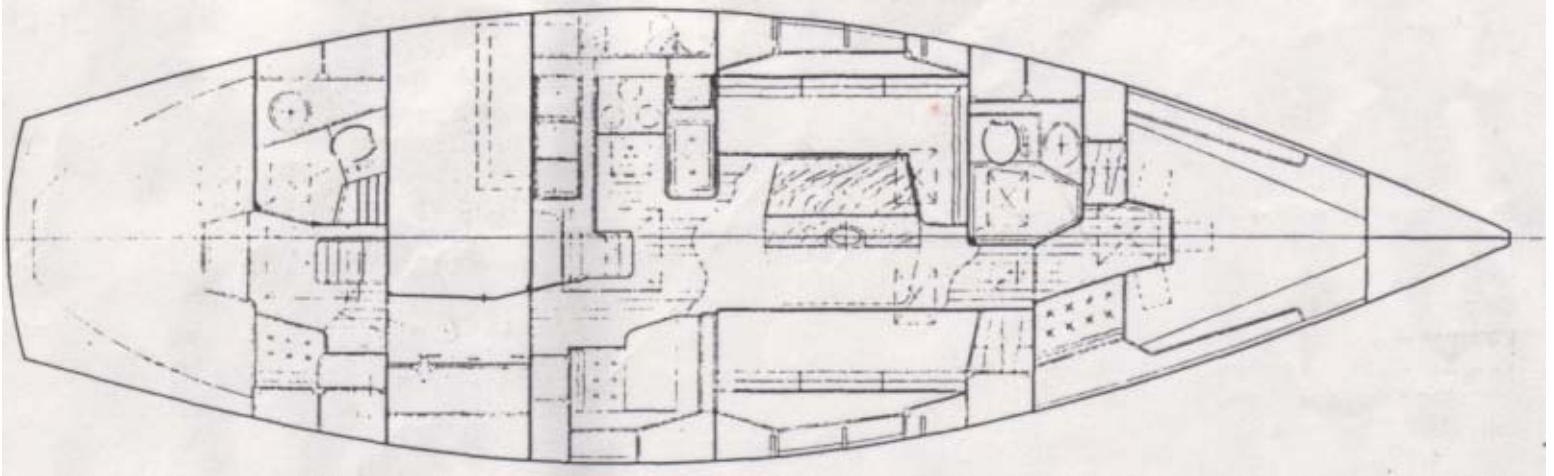


# INTREPID

## 40 CENTER COCKPIT



## STANDARD EQUIPMENT

### HULL

Hand Laminated Fiberglass Hull w/  
V:" Airex Core Unidirectional  
Laminate in Highly  
Stressed Areas Brass Rub Rail  
Gelcoat Whale Stripe Anti Fouling  
Bottom Paint w/ Epoxy  
Undercoat  
External Lead Ballast Solid 1<sup>3</sup>/<sub>r</sub>  
Stainless Steel Rudder  
Post  
(3) Rudder Bearings Bronze  
Rudder Shoe U.L. Listed  
Bronze Seacocks  
Thru-Bolted w/ Double Hose  
Clamps Long Fm Keel w/ Skeg  
Mounted  
Rudder **DECK** 1 Piece Molded  
Fiberglass Deck w/  
" Balsa Core Solid Glass or  
Plywood Coring  
Used in Highly Loaded Areas  
Unidirectional Laminate in Highly  
Stressed Areas  
Molded-in Bulwarks

Contrasting Non-skid Thru-Bolted  
Hull to Deck Joint w/  
Lockouts Used on all Hardware Teak  
Cap Rail Moldings Teak Feature Rails  
Teak Coaming Teak Cabin Top Grab  
Rails Teak Drop Boards Teak  
Companionway Framing (1) Large Sail  
Locker : Deck Storage Locker for (2) 10#

• Propane Tanks Removable Cockpit  
Sole for Engine  
Removal  
(4) 1 W Cockpit Scuppers Scuppered  
Seat Hatches (2) Companionway  
Hatches w/  
Seahoods  
Stainless Steel Stemhead Stainless  
Steel and Teak Bowsprit  
to Handle (2) Anchors Chain  
Locker Storage for (2)  
Anchor Rods

### DECK HARDWARE & FITTINGS

Pedestal Wheel Steering Pedestal  
Mounted Engine Controls Pedestal  
Guard

Pedestal Brake 32" Destroyer  
Wheel 12" Bow Cleats (2)  
Bronze Large Locking Bow  
Chocks  
(2) Bronze  
10" Stern Cleats (2) Bronze Stern  
Chocks (2) Bronze 8' Genoa Track 8'  
Recessed In-board Genoa/Jib  
Track (2) Lewmar #48 Bronze Self-  
Tailing  
Genoa Winches (2) Genoa Sheet  
Blocks (2) Genoa Turning Blocks (2)  
Genoa Sheet Cleats (Bronze) 10"  
Lock-in Winch Handles (2) Mainsheet  
Traveler on Aft Cabin  
House Lewmar #42 Bronze Self-  
Tailing  
Mainsheet Winch (7) Aluminum  
Framed Lexan Deck  
Hatches  
(12) Polished Bronze Opening Ports  
Teak Dorade Ventilator Box w/  
Lexan Top and Stainless Steel  
Dorade Guard

(2) Bowsprit Anchor Rollers Electric  
Anchor Windlass w/ Deck  
Switch  
(2) Anchor Warp Deck Pipes Welded  
Stainless Steel Double Bow  
Rail Welded Stainless Steel  
Double  
Stern Rail Stern Mounted Stainless  
Steel Swim  
Ladder  
Double Lifelines Lifeline Boarding  
Gates (P&S) Offshore Stanchions w/  
Reinforced  
Bases  
**SPARS & RIGGING** Clear Anodized  
Aluminum Spars Keel Stepped Mast  
Double Lower Shrouds Single  
Spreader Rig Lewmar #16 Main  
Halyard Winch Lewmar H30 Genoa  
Halyard Winch Lewmar #8 Jiffy  
Reefing Winch Jiffy Reefing on Boom  
(2 Reef  
Points) Pre-Stretched External  
Rope  
Halyards  
Internal 4:1 Outhaul on Main  
Adjustable Topping Lift %" (1x19)  
Wire Standing Rigging  
w/ Norseman Fittings Bronze Open  
Body Turnbuckles Sheets and Blocks  
Hood Sea-Furl Headstay Anchor Light  
Spreader Lights Tri-color Masthead  
Light Deck Light Steaming Light  
**DIESEL AUXILIARY** Perkins 4  
Cylinder, 4-108 Diesel, 46  
Horsepower Fresh Water Cooled  
2.1:1 Reduction  
Gear  
90 Gallon Fuel Tank w/ Gauge Dual  
Fuel Filters Water Separator Waterlock  
Muffler Wire Reinforced Multi-ply  
Exhaust  
Hose Fiberglass Engine Bed w/  
Molded  
Oil Sump  
Adjustable Engine Mounts 1',1" Bronze  
Propeller Shaft Offset  
for Easy Removal Thordon 'Longlife'  
Shaft Bearing Pedestal Mounted  
Engine Controls Full Engine  
Instrumentation High Output Alternator

Engine Room Insulated, Vented,  
and Soundproofed Engine Room  
Lights **ELECTRICAL** 12 Volt Circuit  
Breaker Panel w/  
Battery Voltage Meters  
Spare Circuits  
1 Large Amperage 'House' Battery 1  
Engine Starting Battery Battery  
Paralleling Switch Custom FRP  
Battery Boxes Vapor Proof Battery  
Switches Ample Interior Lighting  
Courtesy Lights International  
Navigation Lights Spreader Lights  
Fore Deck Light & Steaming Light  
on Spar Anchor Light Tri-color  
Masthead Light Lightning  
Ground System Tinned Copper  
Wiring in DC  
Harness  
Bonded Underwater Hardware 110  
Volt Shore Power System **TANKS &  
HARDWARE** (2) Stainless Steel  
Water Tanks  
(200 Gallons Total) Stainless Steel  
Sink in Forward  
Head  
Porcelain Sink in Aft Head Deep  
Double Stainless Steel Galley  
Sink  
Automatic Bilge Pump Electric Shower  
Sump Pump (1) Manual Bilge Pump  
Mounted in  
Cockpit 49 Gallon Holding Tank -  
Molded,  
Seamless Fiberglass Pressurized  
Hot and Cold Water  
System Stainless Steel Hot Water  
Heater  
(9 Gallons)  
Manual Back-up Water System (2)  
Showers Fire Retardant Fiberglass  
Fuel Tank  
(90 Gallon Capacity)  
**INTERIOR** Interior Wood Teak  
and Select  
Hardwoods - Varnished  
Ash Ceiling  
Laminated Teak Bulkhead Trim Teak &  
Holly Sole Stainless Steel Dustbin in  
Floor  
w/ Grate Berths for 7 Large V-  
Berth with Seat and Filler  
to Complete Double Berth

(2) Fully Enclosed Heads  
w/ Showers Navigation Station w/  
Large Chart  
Table  
Drop Leaf Dining Table 5" High  
Quality Foam Cushions  
w/ Decorator Fabrics (38) Opening  
Traps & Drawers (2) Hanging Lockers  
(1) Wet Locker  
Additional Bin and Slider Storage  
Stainless Steel Ladders w/ Large  
Teak Treads Highly Grafted  
Louvered Locker  
Doors w/ Trimmed Openings Aft-  
Cabin Walk-Thru Laminated Maple  
Work Bench Large Aft Cabin w/  
Companionway **GALLEY** 'U'-Shaped  
Galley 15 Cubic Foot Ice Box  
Mechanical Refrigeration Deep  
Double Stainless Steel Sink High  
Efficiency Pressurized Hot &  
Cold Water System Manual Back-up  
Water System Ample Galley Storage  
Large Hinged-out Trash Bucket High  
Pressure Laminate Counter  
Tops Stainless Steel Three  
Burner  
Propane Stove w/ Oven  
Stainless Steel Stove Surround  
w/ Sea Rail  
Galley Ventilation Hatch Dish  
Storage Racks **SAFETY GEAR**  
Emergency Tiller Double  
Lifelines w/ Offshore  
Pelican Hooks Tall Offshore  
Stanchions w/  
Reinforced Bases Molded-in  
Bulwarks Molded-in Non-skid on  
Deck Lightning Ground System  
U.L Listed Seacocks Large  
Cockpit Scuppers Jiffy Reefing  
High Capacity Manual Bilge Pump  
Electric Bilge Pump International  
Navigation Lights Fire Retardant  
Fiberglass Fuel Tank Bonded  
Underwater Hardware Interior and  
Exterior Hand Rails Courtesy Lights  
Stainless Steel Stove Surround Stove  
Sea Rail w/ Harness Clips