



CDSOA Northeast Fleet Maine Cruise 2017

Maine's Eastern Casco Bay and Mid-Coast

August 7-12, 2017

Please register by August 5th.

Make your mooring reservations early!

Questions? Contact Event Organizers are **Joe DeAlteris** and **Nancy Weaver**,
SV Dream Catcher II, CD36, Ph: **401-741-1129**; Email: jdealteris@uri.edu

For anybody who would like to sail along with Dream Catcher II and her crew or just meet us in an anchorage or two during this year's "Maine Cruise" here's our tentative itinerary:

Friday, 4 August 2017 -- Annual Lobster Bake at Robinhood Marine Center (RMC), *Dream Catcher II* departs RMC on Maine's mid-coast, on Saturday, 5 August 2017, we will be in the Basin, and Sunday, 6 August 2017, we will arrive in Potts Harbor, Dolphin Marina and Restaurant

CDSOA Northeast Fleet Maine Cruise:

Mon, Aug 7	Potts Harbor , dinner at Dolphin Marina Restaurant
Tue, Aug 8	Snow Island , happy hour on boats
Wed, Aug 9	Sebasco Harbor Resort , cookout/picnic or restaurant dinner on shore
Thu, Aug 10	The Basin , New Meadows River, happy hour on boats
Fri, Aug 11	Riggs Cove (off Sheepscot River and Knubble Bay – Robinhood Marine Center) – group dinner at the Osprey Restaurant
Sat. Aug 12	Boothbay Harbor , Tugboat Inn Marina, happy hour on boats

Sunday, Aug. 13 – Dream Catcher II proceeds to Port Clyde or Tenants Harbor
Monday and beyond, Dream Catcher II heads into Penobscot Bay, bound for NE Harbor, and Acadia.

Fleet communications will be on VHF Ch. 16 and 68.

Please monitor these channels during the cruise.

Hail the "Cape Dory Fleet".

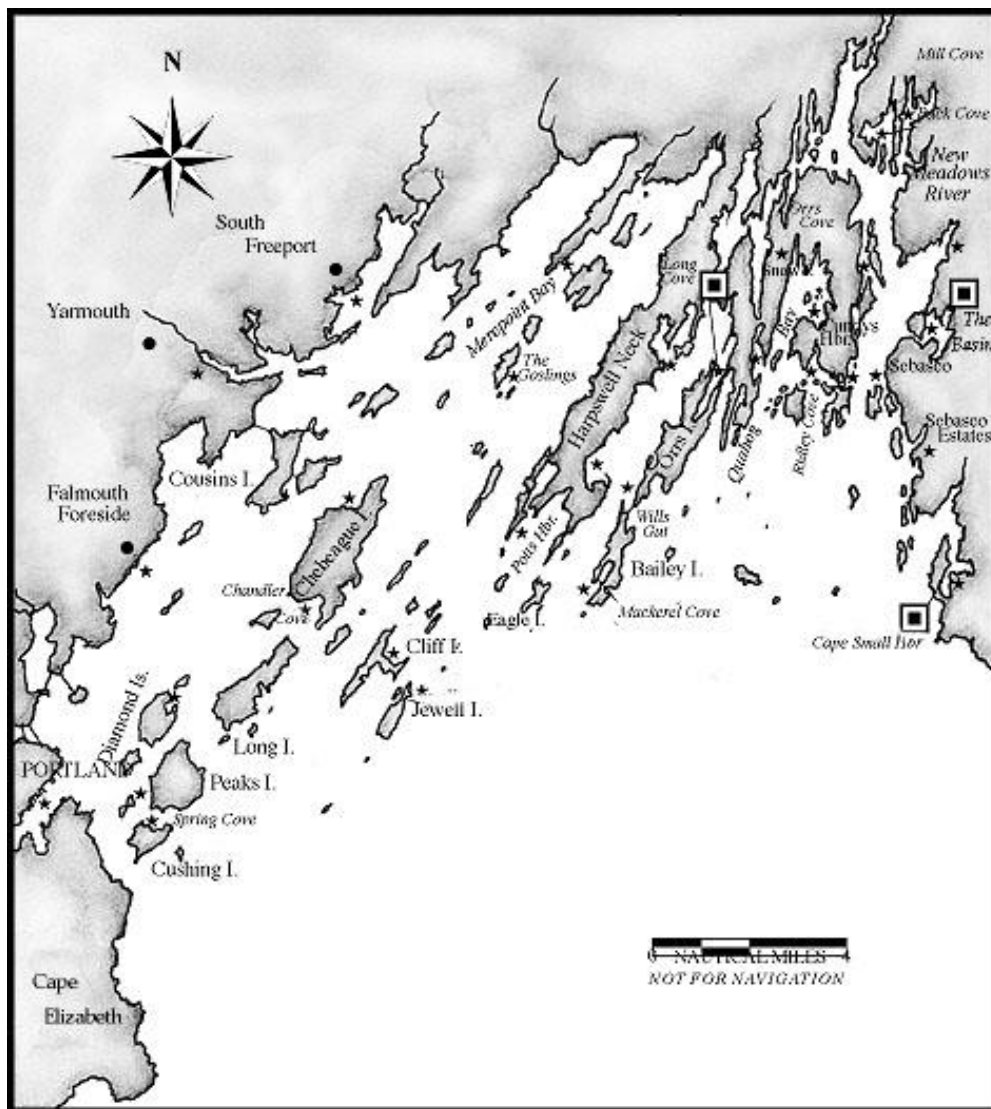


Figure 1. Casco Bay Overview

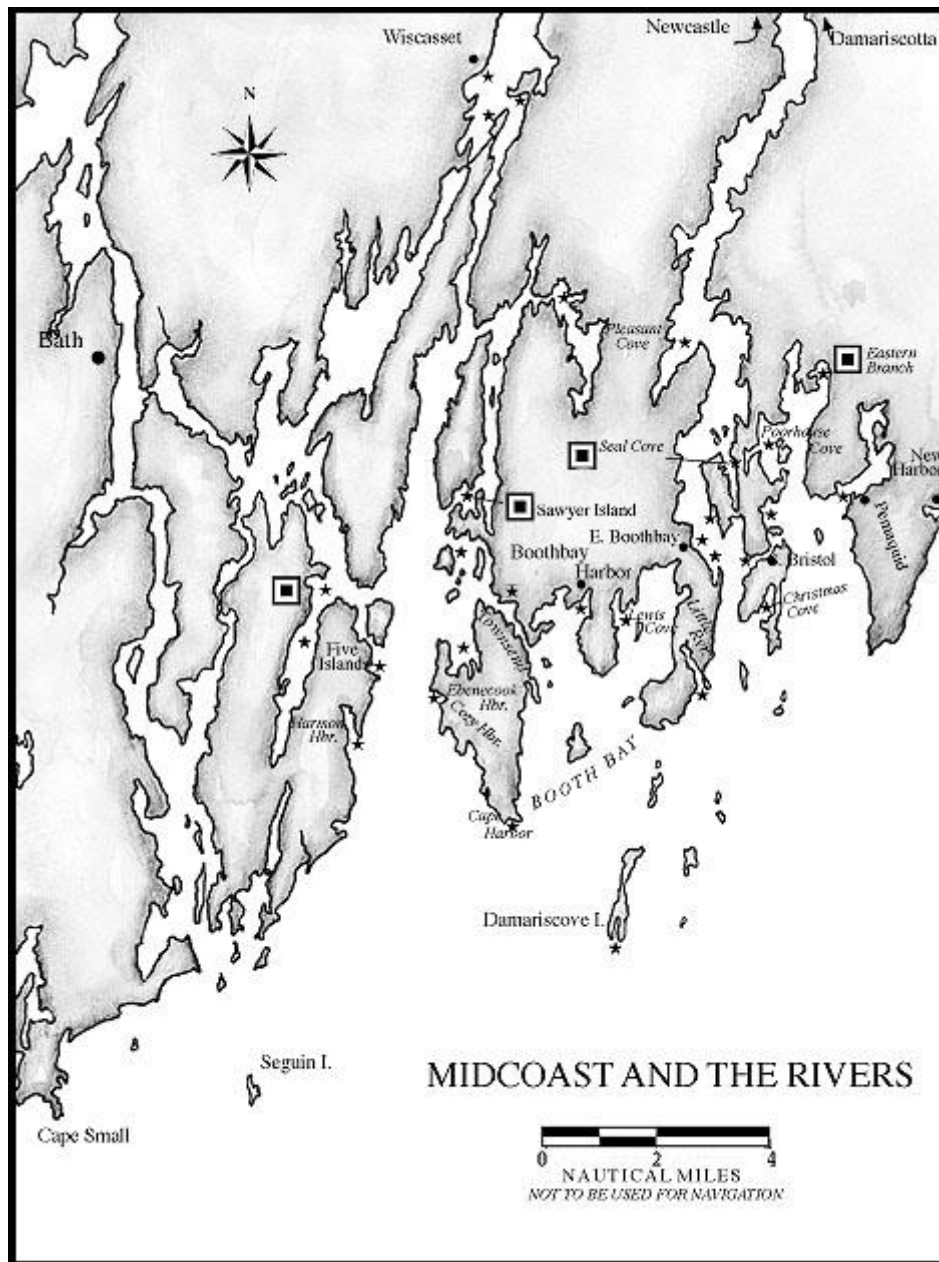


Figure 2. Midcoast and the Rivers Overview

Monday, 7

August 2017, Potts Harbor, Dolphin Marina and Restaurant

(www.dolphinmarinaandrestaurant.com)

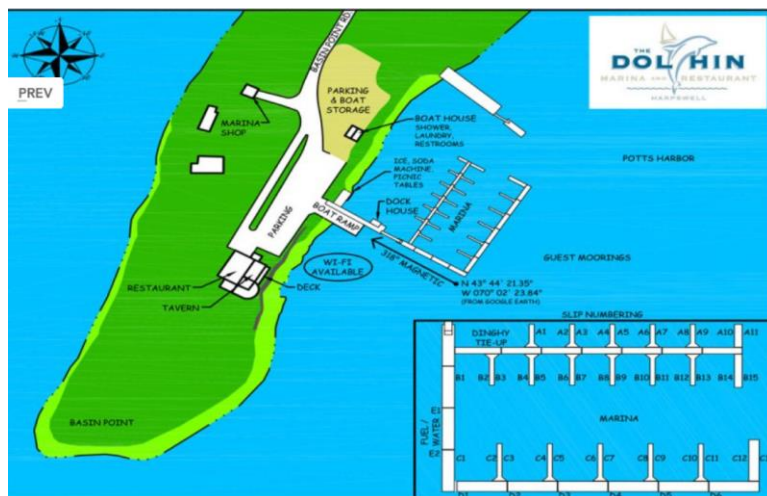
Theme: POTTS HARBOR is a great, wide-open bay at the southern end of Harpswell Neck. At first glance, it appears exposed to prevailing winds. Inside, however, the surrounding islands and ledges provide reasonable protection all the way around. Easy to enter, with updated facilities, Potts is a good stop for yachts traveling east or west or exploring Casco Bay.

Approaches: From outside Casco Bay, run from Halfway Rock, with its 76-foot lighthouse, to red-and-white bell "BS" (43° 41.72'N 070° 03.44'W) at the entrance to Broad Sound. In Broad Sound, expect a considerable current on the ebb or flood. Pass between green gong "1" and nun "2" southwest of Eagle Island.

Round to starboard between the red nun "4" on the ledge west of Upper Flag Island and red bell "6" off Little Birch Island. From there, the entrance between Horse Island and Thrumcap into Potts Harbor is wide and easy.

From the east, there is a well-marked, if circuitous, channel into Potts which should be attempted only in good visibility. Start with nun "2" north of Haskell Island, which should be left to starboard, and follow the channel buoys—reds to starboard and greens to port—around the hairpin to the south and then north and west again into Potts.

Anchorage and moorings: The charts show the anchorage inside the southwest tip of Harpswell Neck. This is the location of Dolphin Marina where you can obtain a mooring or dockage for the night in a low-tide depth of 6 feet. **Moorings (\$35/night) are being held for us, but captains are asked to contact the marina to reserve.** Sooner rather than later is strongly advised as they anticipate the Boston Yacht Club arriving the same day. Rumor has it that they deliver hot coffee and fresh homemade blueberry muffins to boats at the dock or on the moorings each morning!



If you prefer to anchor, the mud bottom is shallow, and there is plenty of swinging room near the moored boats. Potts Harbor is almost a mile across, so it may not be a quiet anchorage in heavy weather. Quite a chop can build up. In a blow from the north or east, you might consider anchoring east of Ash Point.

For the Boat and Crew: This highly rated, family owned marina pumps gas and diesel in and holding tanks out. Water and ice are available. They have a fine seafood restaurant, and we hear their chowder is the best in Maine! Complimentary bikes and kayaks may be available, and there is hiking on the island.

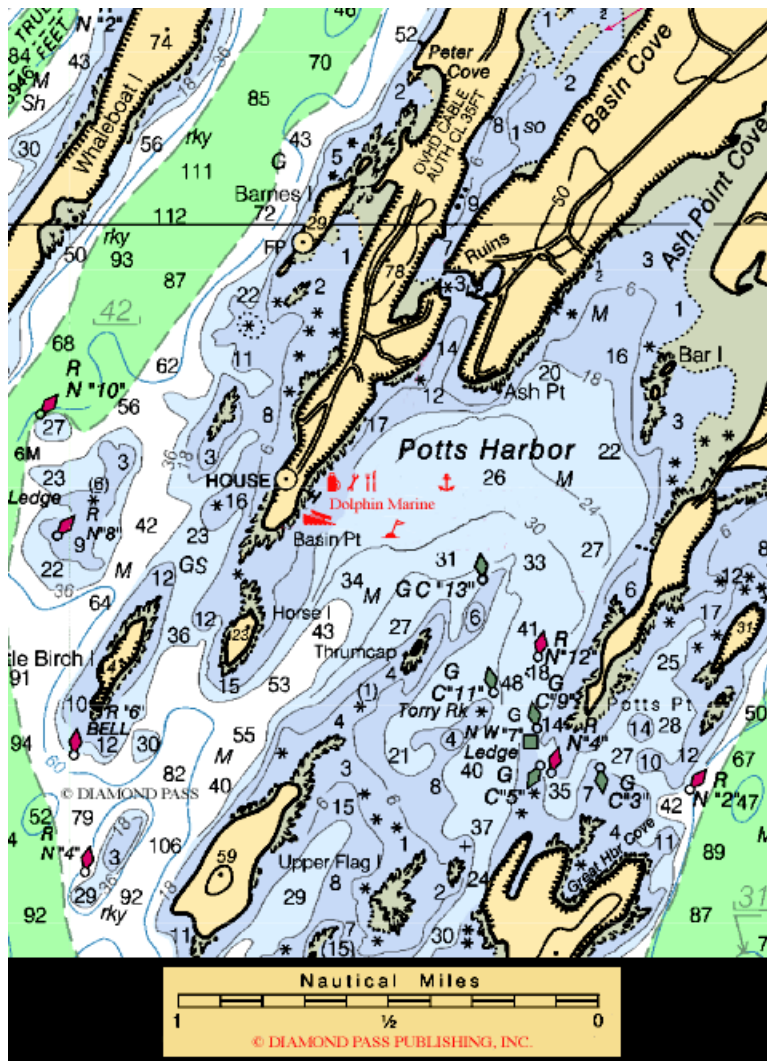


Figure 3. Potts Harbor

Tuesday, 8 August 2017
Snow Island, about 8 nm from Potts Harbor

Theme – Snow Island, at the head of Quahog Bay, is one of those idyllic anchorages you dream about in the dead of winter. It is a very special place—beautiful, tranquil, and, for the most part, uncrowded. Snow Island was the private retreat of the late world-famous sailor Dodge Morgan.

Take your dinghy beyond Ben Island at high tide and turn right to explore a beautiful inlet. The southernmost of the islets is Little Snow Island, owned by the state. In these upper reaches of Quahog Bay, the water temperature is delightful and swimming is a pleasure, rather than an ordeal—even for those from the three-quick-strokes-and-you’re-out school.

Approaches – As you pass Pole Island, note the ledges extending northward. Tiny Center Island, with a spray of trees, is very obvious ahead. Bear to the right to avoid the rock south of center, then turn east and run south of Snow Island, which has a red house on its southeast tip.

Anchorage – Anchor south and east of Snow Island in 16 feet of water at low. The bottom is mud and holds well. You can also anchor between Snow Island and the several islets to the east or work your way along the mainland east of Snow Island to anchor near Ben Island in 9 to 11 feet. Beware, though, of a possible uncharted rock located southeast of Ben Island, between the 2 and the 9-foot soundings. Conceivably this is what makes the 2-foot sounding 2 feet. But sailors Kym and Paul Cournoyer say Ratherby Rock, as it is known, is awash at low and when covered —has claimed its share of prides. Anchor in the area indicated in the chartlet in Figure 4 below.



For the Evening: Once everyone is settled in we can meet on one or two of the boats for evening snacks and cocktails. This is where at least one 2-boat raft-up will be handy, but this decision is entirely up to the captain of each vessel. This area is great for swimming and exploring by dinghy.

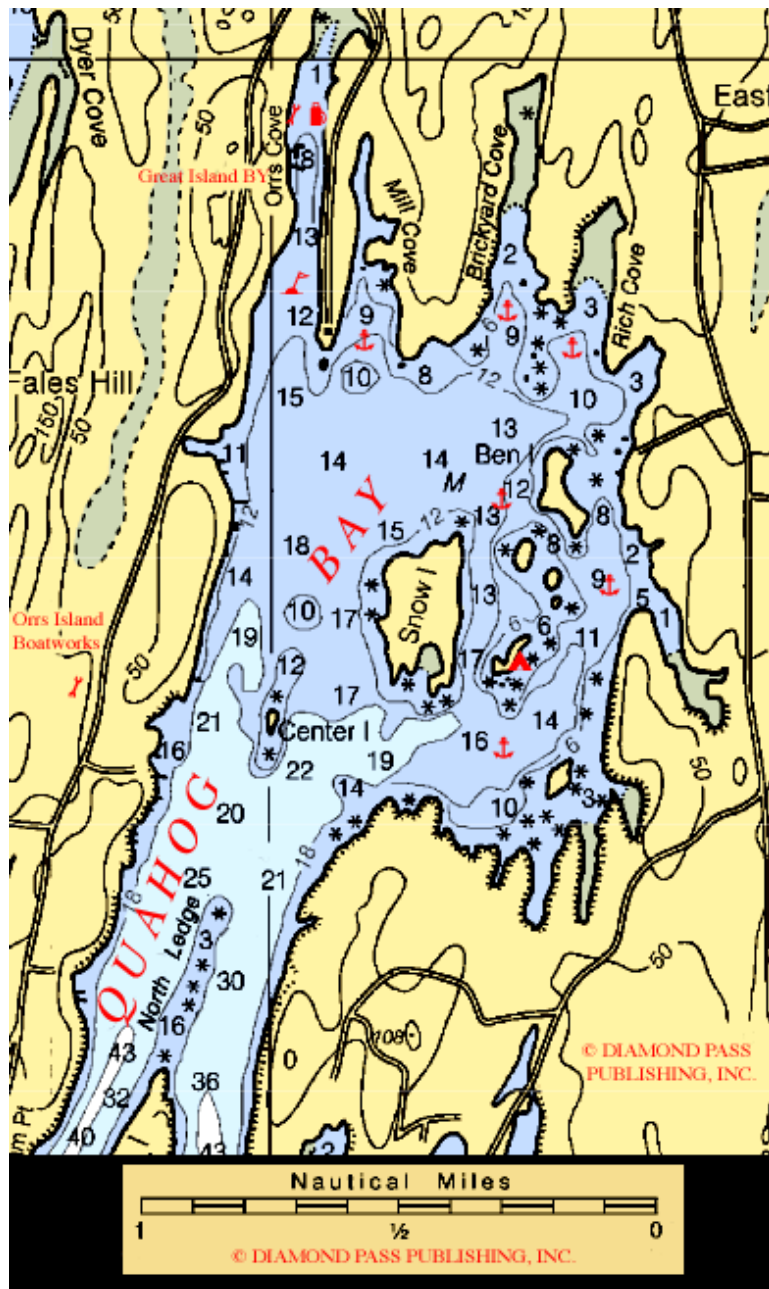


Figure 4 Snow Island/Quahog Bay

Use tide tables for Portland. Mean tidal range is about 9.1 feet.

Wednesday , 9 August 2017

Sebasco Harbor Resort, about 5 nm from Snow Island

(www.sebasco.com)

Theme – Sebasco Harbor is a welcoming spot, well protected under most conditions and easy to enter. It is probably the most convenient harbor at this end of Casco Bay, and it is not far out of the way for boats traveling east or west. On the chart it looks wide open to the south, though ledges at the harbor's mouth and the Dry Ledges farther out give it a fair degree of protection. Before the days of refrigeration, this harbor sometimes was filled with trade ships taking on ice from the Cornelius Ice Pond for delivery to all parts of the world. Now it is the site of Sebasco Harbor Resort, a long-established and well-appointed resort whose resources are available to the visiting yachtsman. With its ample parking and facilities, the resort makes a good place for crew changes.

Sebasco Harbor Resort (Ch. 09; 207-389-1161, 800-225-3819; www.sebasco.com). The cupola marked on the chart is a many-layered octagonal green-and white wedding cake of a house called the Lighthouse. Sebasco's dock and float are just north of this Lighthouse, with 6 feet of depth at low tide. Pump-outs, ice, and showers are available.

Approaches – Coming from the south, leave the Jamison Ledge can "7" to port and head for flashing red "8" at Harbor Island Point. Note unmarked Dry Ledges on the chart and make sure you are well to the west of them. At flashing red "8", turn east and continue well beyond can "1" before heading north into the harbor. The ledges making out a long way from the southeast tip of Harbor Island are exposed except at high tide. The less prominent ledges on the right side are marked by a privately maintained beacon. It is safe to turn north into the harbor when you can see the channel between the boats moored to the west side of the harbor and those on the east side.

Anchorage and Moorings: During normal summer winds, the ledges at the entrance to the harbor provide good protection, and this is a comfortable anchorage. Strong wind from the southwest, though, blows in swells, and you will sleep more peacefully on one of Sebasco Harbor Resort's dozen or so stout moorings, grouped on the west side of the harbor. The moorings of Sebasco Harbor Resort are marked with dayglow polyballs. Reservations are recommended. They are holding some moorings for our group at \$ 35/per night but, again, each captain should contact the Resort to make the reservation. During the day, a launch service operates from the resort float on the east shore. The usual three toots will summon the Sebasco's launch, or you can take your dinghy to the float. Brewer's Boatyard also maintains some rental moorings in the harbor. If no moorings are available, there is usually room to anchor in mid-harbor, in 15 or 26 feet of water (Figure 5 next page).

For the Crew: Sebasco Harbor Resort is a well-known vacation spot. Its facilities include a saltwater pool, golf course, tennis courts, fitness center, and possibly some complimentary bikes. Rental kayaks are also available to visiting boaters. Good hiking around the grounds and to a nearby overlook. There's a great ice cream shack on the way to the showers!

Dinner: Dinner will be ashore perhaps a group cookout/picnic or at their waterfront restaurant. A Lobster/Steak Bake buffet is served during the summer on some evenings outside on the lawn with live music. So many possibilities!



Thursday, 10 August 2017
The Basin , only 3 nm from Sebasco Harbor

Theme: Here is what many yachtsmen dream about when they ponder the ultimate safe harbor—a small lake surrounded by rocky points and dark green trees, with barely a sign of human habitation, the water as still as a millpond, completely protected from every direction.

The Basin is an extraordinary harbor on the New Meadows River, about two miles north of Sebasco Harbor. It is worth going out of your way to make the passage through the deep, narrow entrance and into the broad sanctuary beyond. In this part of the world, this is the best hurricane hole around.

Approaches: Coming up the New Meadows River, pass Cundys Harbor and leave can “5” on Sheep Island Ledge to port. Look along the east shore for a slight indentation which marks the entrance to The Basin. A house with a pointed chimney is just to the north of the entrance.

Turn right into the channel, perhaps 150 feet wide at low tide, and run straight down the middle. The channel narrows to about 75 feet at the left turn where slowed tidal current drops its suspended sediment. Controlling depth is 7 feet here, but turn wide around the bend to find it. Like magic, The Basin will open up before you.

Anchorage: Anchor in the middle of the western part of the Basin, in 14 to 20 feet of water at low. The bottom is mud. Even at the height of the summer season, The Basin usually has only a handful of boats, and there is room for a fleet.



Some boats work their way in close to the small island, Basin Island, to the east, or close to the rocky point of land that juts down from the north, but use caution. As benign as The Basin seems, the east side is shoal, and there is a ledge almost dead center, shown on the chart between two 11-foot spots, which claims its share of unsuspecting yachts. Pass either north or south of it but not over it.

The Basin on a calm night feels like a high mountain lake far removed from the sea. To dispel the illusion, taste the water.

Things to Do: Beautiful Basin Island is owned by the state and can be explored. However, this is a popular stop on the Maine Island Trail, and the steep banks of this tiny island are eroding. Walk softly.

The Basin holds some of the warmest salt water on the Maine coast (67° F). The timid won't find a better place to take the plunge.

We can plan to gather aboard one or two of the boats again for happy hour.

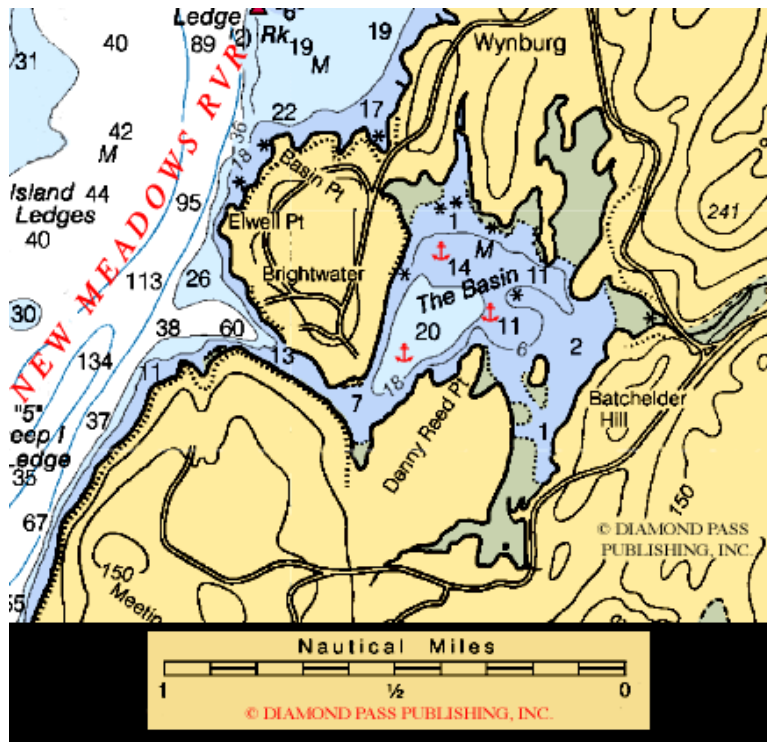


Figure 6 The Basin/New Meadows River

Use tide tables for Portland. Mean tidal range is about 9.1 feet.

Friday, 11 August 2017

Riggs Cove, Derecktor Robinhood Marine Center, about 18 nm from the Basin

(www.robinhoodmarinecenter.com)

Theme: Riggs Cove, a real community in itself, is located off the beautiful Sheepscot River and Knubble Bay. There's nothing else quite like it, a marina containing the historic buildings of a Maine seaside village. These now house a cruiser's library, a history gallery and the old post office. Great places to read, work, or relax in a well-protected cove. It's a quiet retreat, "but the mosquitoes might throw you a party," in the evening.....pack some bug spray just in case.

Approaches: Of all the rivers on the coast of Maine, the Sheepscot offers the best cruising, perhaps because it is more like a bay than a river. The entrance opens invitingly between Georgetown and Southport Islands, two miles wide and almost free of dangers. The approaches to Riggs Cove are well-marked, but Goose Rock Passage can be tricky with a strong current which can run up to 3 knots at mid-tide. It is advisable to time going through the passage with the tide, if possible, or you may struggle going against the current. There will be a flooding tide in the river between 9:00 am and 3:00 pm on Friday, 12 August so this passage to Robinhood should be easy. If you leave tomorrow by 8:00 am you should have an ebbing tide down the river until 10:00 am. As you approach from the east through Goose Rock Passage, the boats moored at Derecktor Robinhood Marine Center will be visible as soon as you come around Lowe Point. The only danger is Blacksmithshop Ledge, just south of Robinhood Marine, marked with green daybeacon "1."

Anchorage and Moorings: Derecktor Robinhood Marine Center has at least 70 moorings, of which a dozen are usually available for transients (\$35/night based on 2016 rates) or anchor outside the mooring field toward Robinhood Cove. As before, each captain is asked to contact the marina to secure a mooring reservation for his/her own vessel. If you venture into Robinhood Cove itself, it's deep until you're well inside, so you may want to continue into the cove to find shallower water to drop your hook, but it will be a long dinghy ride to the marina. These locations are indicated on Figures 7 and 8 below.

For the Boat and Crew: Fuel, ice, and pump-outs are all available, but you may wish to procure water at a different stop. The Osprey Restaurant and Tavern serves very tasty meals and beverages of all kinds. Last year the nearby Robinhood Free Meetinghouse, within easy walking distance uphill, was opened as a very popular weekend morning coffeeshop.

Dinner Friday Evening: Let's get together for our final dinner together at the Osprey Restaurant and Tavern at the marina.

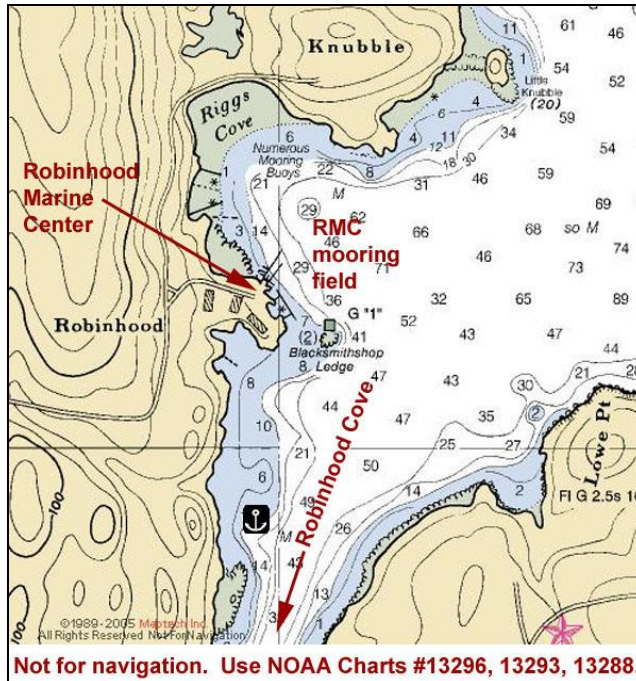




If you cannot join us during the cruise, why not hop in the car and drive to Robinhood Marine Center on Friday to meet up with the rest of the group for dinner? Just let us know so we can get the number of people for our reservation correct. Contact either Joe DeAlteris or Nancy Weaver. You'll find contact information below. Thanks!

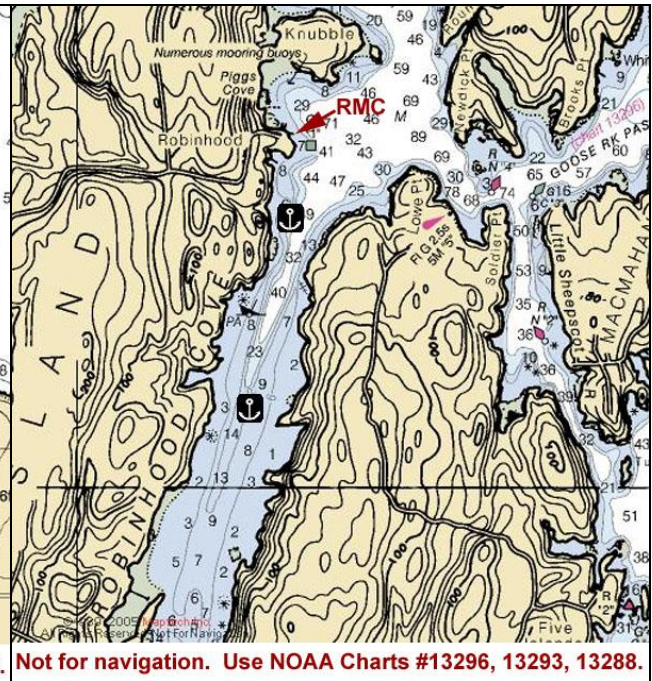
Directions to Robinhood Marine Center from Portland:

Take I-295 (North or East) - go 26.0 mi
 Take exit #28/US-1 onto US-1 CONN toward COASTAL ROUTE / BRUNSWICK / BATH - go 1.3 mi
 Continue on PLEASANT ST [US-1] - go 1.1 mi
 Bear LEFT to follow US-1 - go 9.5 mi
 Bear RIGHT toward ME-127 - go < 0.1 mi
 Bear RIGHT on ME-127 - go 5.5 mi
 Turn LEFT on ROBINHOOD RD - go 1.3 mi
 Bear LEFT on KNUBBLE RD - go 0.6 mi



Not for navigation. Use NOAA Charts #13296, 13293, 13288.

Figure 7 Riggs Cove/Robinhood
 Sheepscot River and Knubble Bay
 Robinhood Marine Center
 43° 51' 12"N, 69° 43' 59"W



Not for navigation. Use NOAA Charts #13296, 13293, 13288.

Figure 8 Robinhood Cove
 Sheepscot River and Knubble Bay
 43° 50' 17"N, 69° 44' 12"W

Use tide tables for Portland. High tide at Robinhood is approximately 15 minutes after high in Portland. Mean tidal range is about 9 feet.

Saturday, 12 August 2017

Boothbay Harbor, Tugboat Inn and Marina , about 8 nm from RMC

(www.tugboatinn.com)

Theme: BOOTHBAY HARBOR is one of the best harbors on the Maine coast. Not only is it large and well protected, it is easy to enter under all conditions. Here are all the services a yachtsman might need and then some. If you are cruising west or east, it is very convenient, less than 5 miles off the direct route.

The harbor bustles with boats of every description and has the air of a city of the sea. Like Kennebunkport, the town is crowded and touristy, but festive. Shops and restaurants jam the streets, and the calendar is filled with summer activities.

Approaches: Coming from the west, round green bell "1C" off Southport Island, leaving the Cuckholds (two little bare islets) to port. The Cuckholds Light, a good landfall, is a distinctive white octagonal tower 48 feet high on a dwelling with a foghorn and radio beacon.

Pass either side of high Squirrel Island, observing red lighted buoy "4" if you are to the west. Head for red lighted buoy "8" off Tumbler Island, leaving Burnt Island, with a lighthouse and a horn, to port. Don't be tempted to go inside Tumbler Island. Keep it to starboard. Leave green lighted buoy "9" to port at McFarland Island and enter the inner harbor.

Coming from the east, find red-and-white bell "HL" at the beginning of Fisherman Island Passage, sailing north of Hypocrites, Fisherman Island, and small, grassy Ram Island with its lighthouse and foghorn. Keep the three nuns marking the ledges to the south of Linekin Neck to starboard and turn northward. Leave high Squirrel Island to port and enter as described above.

In fog, keep your radio on to listen for sécurité calls—some whale-watching boats waste little time getting to the feeding grounds, even when the visibility is zero.

Anchorage and Moorings: Because Boothbay Harbor is one of the busiest boating centers on the coast, anchoring is prohibited everywhere in the harbor except in exposed Mill Cove, on the backside of the town, north of Signal Point Marina's docks. However, there are a dozen or more places to find a mooring or berth (see sketch map). The most convenient locations are in the inner harbor, at the northeast corner of Boothbay Harbor. Tugboat Inn and Marina and Boothbay Harbor Marina are right in town. **Tugboat Inn and Marina is holding moorings for our group at \$35/night.** Please consider making your reservation sooner rather than later here also as it will be a busy harbor.

Tugboat Inn and Marina (Ch. 09; 207-633-4434; www.tugboatinn.com/marina.htm). The Tugboat Inn has a large marina and many moorings just south of Pier 8. This is the first facility on your left as you enter the inner harbor. The marina provides a large amount of dockage, which can accommodate boats to 110 feet, with 12 feet of water at the outer floats with electricity, water, ice, and pump-outs, but no fuel. Their moorings have bright polyball floats. Ashore, they have very pleasant coin-operated showers and a laundromat.

Carousel Marina and Brown's Wharf Marina are well down Spruce Point along the eastern side of the harbor, about half a mile from town. The distance from town has the advantage of being less noisy.

Public Landing (harbormaster Ch. 09, 16; 207-633-5281). Just south of Fisherman's Wharf Inn and Pier 6 are the floats of the public landing. Their 120-foot length can accommodate boats of up to 50 feet in depths to around 10, with a generous three-hour maximum tie-up. There are no facilities. The harbormaster keeps his launch here.



<http://www.tugboatinn.com/marina.htm>

Let's go ashore and explore – as a group, or on your own. Bicycles and kayaks can be rented from Tidal Transit Kayak Company (18 Granary Way), which is also nearby and off Townsend Avenue.

Let's plan a Happy Hour on the boats at 5 PM, and then for dinner you're on your own to enjoy the town and harbor of Boothbay!

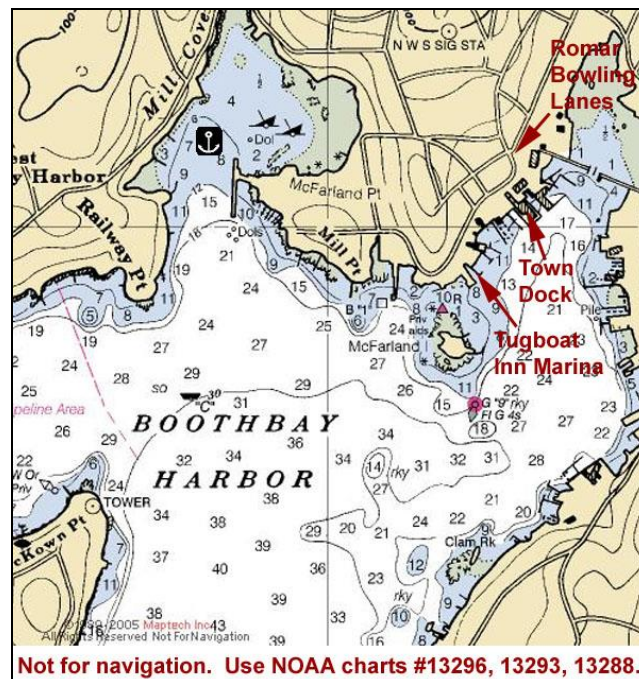


Figure 9 Boothbay Harbor
Tugboat Inn Marina
43° 50' 56"N, 69° 37' 44"W

Use tide tables for Portland. High tide in Boothbay is approximately 5 minutes before high in Portland. Mean tidal range is about 9 feet.

Register online by **August 5th by clicking on the link below!**
http://www.capedory.org/fleetevents/NE-2017-MaineCruise_regform.php

**ALL OWNERS OF BOTH CAPE DORY AND ROBINHOOD POWER AND SAILBOATS,
CDSOA MEMBERS AND NON-MEMBERS, ARE WELCOME TO ATTEND.**

**ALL CAPTAINS ARE RESPONSIBLE FOR THEIR OWN NAVIGATION
AND THE SAFETY OF THEIR VESSELS AND CREW.**

USE NOAA CHARTS 13288, 13290, 13293, 13295 & 13296.

Web Resources:

Active Captain: <http://www.activecaptain.com/>
CDSOA, Inc.: <http://www.capedory.org/>
Boothbay Harbor Region: <http://www.boothbayharbor.com/>
Tugboat Inn Marina: <http://www.tugboatinn.com/>
Tidal Transit Kayak Company: <http://www.kayakboothbay.com/>
Robinhood Marine Center: <http://www.robinhoodmarinecenter.com/>
Maine Coast Internet Guide: <http://www.coastguides.com/>
Maine Harbors: <http://www.maineharbors.com/>
Maptech.com: <http://www.maptech.com/>
NOAA Office of Coast Survey: <http://www.charts.noaa.gov/InteractiveCatalog/nrnc.shtml>

Recommended Resource/Reading:

Credits – much of the information above was directly quoted from —A Cruising Guide to the
Maine Coast, by Hank and Jan Taft, Curtis Rindlaub, Diamond Pass Publishing, Inc., and Active
Captain.