



CDSOA Carolinas Fleet South River Float-in

South River, NC

May 11-12, 2019

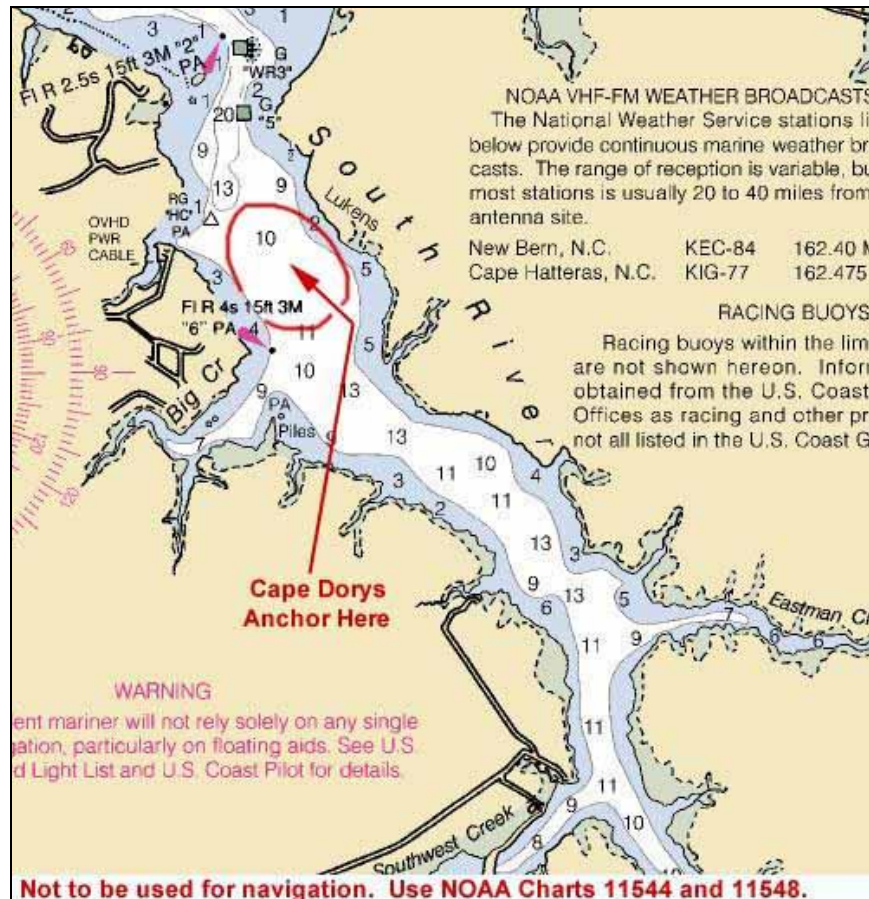
Please RSVP ASAP.

Questions? Contact Event Organizer Capt. Dick Turner; 252-514-8120 (c)

Ahoy Cape Dory Sailors & Friends!!

While you are thinking about this year's upcoming cruises, think also about South River, not so far from Oriental, NC, for the weekend of May 11-12. All Cape Dory owners, wannabes, members, non-members, and families are welcome to attend. The Cruise Capt. expects a stellar turnout for the first cruise of the year. We have been there several times, and our actual raft-up location may vary, so first arrivals get their pick and the others can huddle up close or choose other places within shouting and signaling distance. For those who will be arriving on Friday, the 10th, I'll bet that a call on channel 16, and follow up communications on channel 72, will find you a Cape Dory or two out there or on the way.

**Fleet communications will be on VHF Ch. 16 and 72.
Please monitor these channels during the cruise.
Hail the "Cape Dory Fleet".**



Saturday will probably be the most popular outbound travel day and I would think leaving Oriental #1 by midmorning would be best, giving a chance for some sailing across the river, up the river, or whatever on a leisurely trip to the anchorage. Again, channels 16 & 72 will help you get together with fellow travelers.

Float Plan:

You can cruise to South River at your own pace, arriving either Friday evening or Saturday daylight hours.

The entrance to the river is a Flashing Green "1", at 34°59.37'N, 76°35.39'W, aligning the channel with Flashing Red "2", at 34°58.89'N, 76°35.05'W, and can be found on **NOAA Chart 11544**. The entrance is a little tricky in that there is a narrow segment between markers #1 and #2, and you can go aground if you're not in the middle of the channel. As you negotiate between these two markers, look astern frequently to assure you're lined up within the channel. You then enter a curved segment to the right, fairly well marked, but with more reported markers than on the chart. Under less than optimum conditions, my advice is to douse the canvas and motor in after passing #1. We intend to raft up, weather permitting, between Green Day Marker #5 and Flashing Red #6, where the river widens somewhat with depths between 9-11'.

The raft-up will last as long as is feasible, with libations and snacks the order of the day before supper time. We'll break up the raft before the evening hours. Sunday or Monday, it will be Captain's choice on choosing a departure time.

The South River Float-in has been considered the 'Shakedown Cruise' for a number of years, to encourage everyone to work on their Cape Dorys, etc. and get them in top condition for the other planned events.

As always, navigation, as well as the safety of vessel and crew, is the responsibility of each Captain. The information contained herein is intended as a guide, and not for explicit navigational purposes.

LINK to charts 11544 and 11548 including South River; **NOT TO BE USED FOR NAVIGATION:**

NOAA Chart 11544: <https://charts.noaa.gov/OnLineViewer/11544.shtml>

NOAA Chart 11548: <https://charts.noaa.gov/OnLineViewer/11548.shtml>

NOAA Chart Locator: <http://www.charts.noaa.gov/InteractiveCatalog/nrnc.shtml>

Have a great trip and we'll see you on the water!

Fair Winds,

Dick Turner
Cruise Captain

Email: tbrhin1@embarqmail.com

Phone: (252)- 514-8120 (c)