



CDSOA Carolinas Fleet Weeklong Spring Cruise

Manteo, NC

June 17-25, 2017

Please RSVP by June 11th!

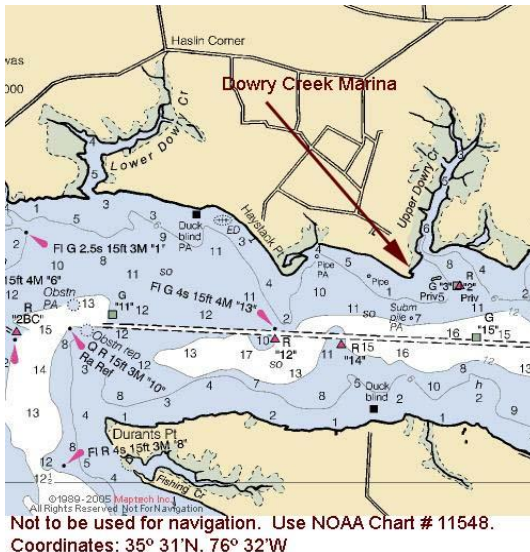
Questions? Contact Event Organizer Captain **Dick Turner**. Email address: tbrhin1@embarqmail.com

Cell: 252-514-8120

Dowry Creek

Day 1, Sat. – 6/17: Leave Oriental, NC at 0800 hrs and head NE to **Upper Dowry Creek Marina** just past Belhaven on the Pungo River. Key navigation points along the route are Maw Pt. Shoal, Bay River, Hobucken ICW, Goose Creek, Pamlico River, and the Pungo River. Hail the marina on CH16. Slip reservations have been made in each boat's name. Fuel and ice available, along with a "loner car" to Belhaven, if needed. Did I mention the pool for relaxation? *Contact Dowry Creek Marina at 252-943-2728 for additional information.*

Ref. (Travel distance approx. 50 St M)



Alligator River

Day 2, Sun. 6/18. It's off to the **Alligator River Marina**, with a long trek up the Alligator River – Pungo River Canal which exits into the Alligator River. The marina is hard to port just after passing through the Route 64 swing bridge. Keep G1 & G3 to port. Hail the marina on CH 16. Slip reservations have been made in each boats name. Fuel, ice, Marina Grill, wi-fi and BoatUS member discounts!! *Contact Alligator River Marina at 252-796-0333 for additional information.*

Ref. (Travel distance approx. 47 St M)



Alligator River – Pungo River Canal



Alligator River Marina

Manteo

Days 3 & 4, Mon & Tues., 6/19-20. Next port of call is the **Manteo Waterfront Marina**. Exiting the Alligator River, follow the coastline around Durant Island to the north side of Roanoke Island and the Roanoke Shoal Channel. Hail the marina on CH 16. Slip reservations have been made in each boat's name. *Contact the Manteo Waterfront Marina at 252-473-3320 for additional information.*

(Travel distance is approx. 25 St M)

Please note the following:

Take 90 degree right at marker #10 and proceed to the marina leaving the brown topped gazebo to port.

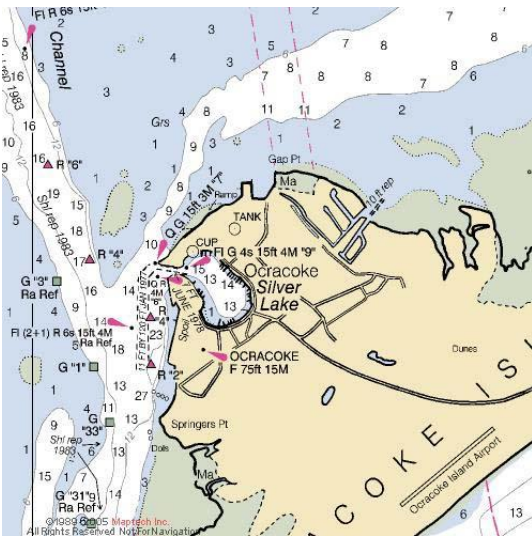
Note: Pay attention when you turn in from the Roanoke Channel into the Shallowbag Bay Channel. There is significant shoaling at G29 in the Roanoke Channel to R4 as you turn into the Shallowbag Bay channel. There is plenty of deep water but you need to go all the way to R30A before you make the turn into Shallowbag. Then stay close to G3 and G5 and far away from R4. The rest of the channel down to R10 is fine but stay 10-15 yards off the red side to have the deepest water.

This is as of April 2017. The depths in the channel will support 7' draft once the shoal is avoided.



Manteo Waterfront Marina

Ocracoke



Not to be used for navigation. Use NOAA Chart # 11550.
Coordinates: 35° 06'N, 75° 59'W

Saturday departure times from Ocracoke will be at the discretion of the various Captains. The decision to depart as a "Fleet" will be discussed over libations the evening before!

This is a tentative itinerary. As the cruise progresses, adjustments may be made due to weather and other unforeseen circumstances. Join the fleet along the way if your time is limited.

Please contact Capt. Dick and let us know if you plan on joining in on the fun so we will know how many boats to be on the lookout for.

Days 5, 6, & 7; Wed – Fri, 6/21-23. The next leg of our cruise is the longest, if the wind cooperates, with an 11-hour sail to Silver Lake on **Ocracoke Island**. Caution is warranted while navigating Roanoke Shoal Channel as well as Old House Channel south of Roanoke Island. Dockage will be on a first come, first served basis at the U.S. Park Service Docks.

Relax at the docks, visit Ocracoke Village, have a libation or two and enjoy the island heading into the weekend.

(Travel distance approx. 62 St M)



RSVP online by June 11th. Just click on the link below!

http://www.capedory.org/fleetevents/NC-2017-ManteoSpringCruise_regform.php

As always, navigation is the responsibility of the Captain, as well as the safety of vessel and crew. The information contained herein is intended as a guide, and not for explicit navigational purposes.

Fair winds and smooth sailing!

-Captain Dick

All owners of both Cape Dory and Robinhood power and sailboats, CDSOA members and non-members, are welcome to attend.

All captains are responsible for their own navigation and the safety of their vessels and crew.

Use NOAA Charts 11541, 11548, 11553, 11554, and 12204.

Web Resources:

NOAA Booklet Charts: <https://www.nauticalcharts.noaa.gov/staff/BookletChart.html>

Dowry Creek Marina: <http://www.dowrycreekmarina.com/home.html>

Alligator River Marina: <https://www.waterwayguide.com/marina/alligator-river-marina>

Manteo Waterfront Marina: <http://www.townofmanteo.com/marina>

Ocracoke Natl. Park Service Docks: <https://www.waterwayguide.com/marina/ocracoke-public-dock-ranger-station>