



CDSOA Carolinas Fleet Cape Lookout Bight Float-in

Cape Lookout, NC

June 24, 25 & 26

PLEASE REGISTER BY "JUNE 20, 2016"

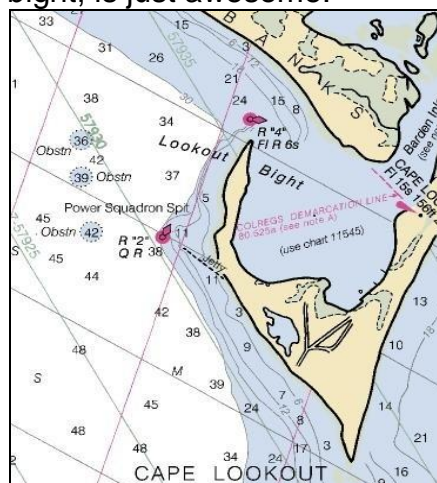
Questions? Contact Event Organizer Hilco Woudstra at 336-254-3691/ email Hilco@hilcowdesigns.com

The Carolinas Fleet is planning a float-in to Cape Lookout, NC during the weekend of June 24-26th. Hilco and Sharon Woudstra are the "Cruise Captains," aboard *Sketcher*. Plans are to raft-up in the Bight. *Sketcher* will be there just after lunch on Friday. We can raft up Friday or early Saturday morning. **[Note: if the weather is bad....plans may change. My cell is 336-254-3691.]**

No planned departure time is scheduled from the Neuse River/Pamlico Sound. Some captains may elect to spend the preceding night in Beaufort and depart for the Bight early Saturday a.m. The Beaufort Town Docks monitor Ch.16 and can be reached at 252-728-2503. While motoring down the ICW to Beaufort, it is suggested that because of the Bascule Bridge opening schedule, it may be more timely to navigate the starboard channel beginning at "RS" and R"30". After passing under the fixed bridge and into the Turning Basin, a turn to port at R"24" will put you in the Morehead City Channel. Continue on through the Cutoff Channel and into the Beaufort Inlet Channel. A port turn to the East around R"12" will hopefully find favorable winds for some blue water sailing to the cape. Close attention should be paid to your navigation aids for any shoaling along Shackleford Banks, especially to port of R"4" at the entrance to the Bight. Once in the Bight, one of the more desirable anchorages is in the cove area, just NE of R"6". There is adequate depth, and a raft-up will be the order of the day. If crowded....look for *Sketcher* (dark blue).

[Note: if weather is good...come to the Bight. We will be there. We are planning a burger cookout on Saturday evening. Would like to have people bring additional food to share...potato salad, tossed salad, and other items. Will talk more about this later.]

As a suggestion, a sightseeing tour of the lighthouse is available, with easy access via dinghy! Also the Ocean beach across the bight, is just awesome.



Sunday or Monday departure times will be at the discretion of the various captains. Please contact the *Sketcher* crew with any questions, as well as letting us know if you plan on joining in on the fun so we will know how many CD members to be on the lookout for!

Register online by June 20th. Just click on the link below!

http://www.capedory.org/fleetevents/NC-2016-CapeLookoutCruise_regform.php

**Fleet communications will be on VHF Ch. 16 and 68.
Please monitor these channels during the cruise.
Hail the "Cape Dory Fleet".**

Any questions regarding this event? Please contact Event Organizer Hilco Woudstra at 336-254-3691 or email Hilco@hilcowedesigns.com.

All owners of both Cape Dory and Robinhood power and sailboats, CDSOA members and non-members, are welcome to attend.

All captains are responsible for their own navigation and the safety of their vessels and crew.

Use NOAA Charts 11545.

Web resources:

Cape Lookout National Seashore (NPS): <http://www.nps.gov/cal/index.htm>

US Harbors - Cape Lookout Bight: <http://nc.us harbors.com/harbor-guide/cape-lookout-bight>

Printable NOAA Booklet Chart Nos. 11552, 11544 and 11545:

http://www.charts.noaa.gov/BookletChart/11552_BookletChart.pdf

http://www.charts.noaa.gov/BookletChart/11544_BookletChart.pdf

http://www.charts.noaa.gov/BookletChart/11545_BookletChart.pdf

Printable NOAA Booklet Charts for the Atlantic Coast:

<http://www.nauticalcharts.noaa.gov/staff/BookletChart.html>

NOAA Tide Predictions - Cape Lookout Bight:

<http://tidesandcurrents.noaa.gov/noaatidepredictions/NOAATidesFacade.jsp?Stationid=8656841>