



CDSOA Carolinas Fleet Cape Lookout Cruise

Cape Lookout, NC

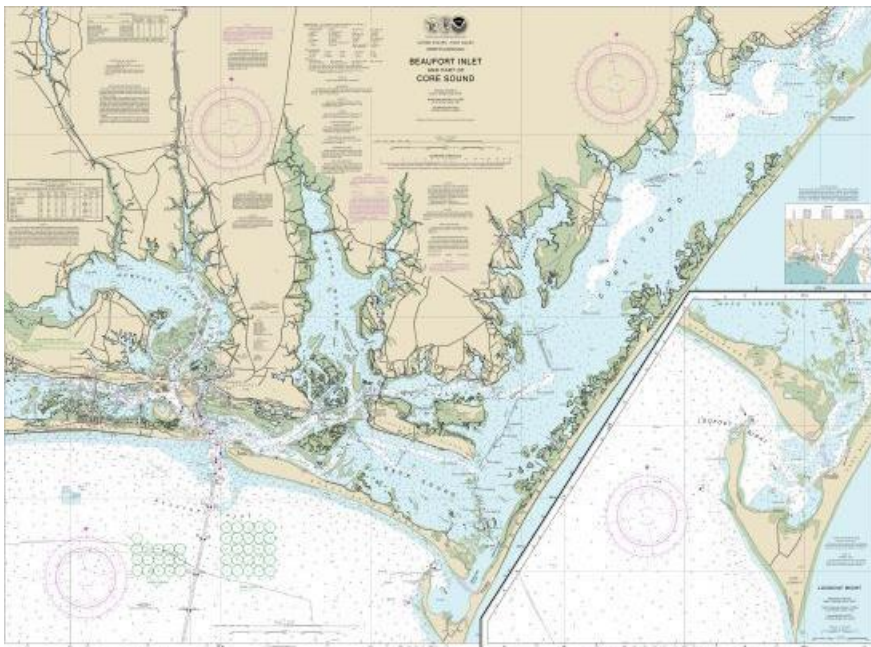
July 17 – 19, 2015

Please register by July 10th!

Questions? Contact Event Organizer Len Laughlin Ph: 919-418-4009 (cell),
Email: llaughlin@nc.rr.com



The CDSOA Carolinas Fleet is planning a weekend cruise to Cape Lookout, North Carolina on July 17, 18 and 19. Those interested in joining the fleet should register online. *Bellus* and crew will plan to depart Oriental Marker #1 at noon on Thursday, the 16th and proceed to Beaufort docks for the evening. We will depart to Cape Lookout on Friday morning, the 17th, weather permitting. If you are unable to make either the Oriental departure or Beaufort departure, please meet the fleet in the Cape Lookout Bight anchorage.



To reach Cape Lookout from Oriental proceed to Adams Creek and the ICW to Morehead City and out Beaufort Inlet. From Beaufort Inlet marker #6 go to a heading of 113 degrees magnetic for 6.18 nm to the entrance of Cape Lookout Bight. For the exact location for the fleet anchorage hail the Cape Dory Fleet on channel 72. We usually anchor southwest of Cape Lookout marker #1 near the shoreline.

NOTE: Beaufort Inlet channel can be quite rough at times particularly if a strong wind is blowing against the tide. It is best to try to time the running of the channel at a slack tide for a smoother passage.

**Fleet communications will be on VHF Ch. 16 and 72.
Please monitor these channels during the cruise.
Hail the "Cape Dory Fleet".**

Any questions regarding this event? Please contact Event Organizer Len Laughlin at 919-418-4009 or via email at l.laughlin@nc.rr.com.

RSVP by July 10th!

http://www.capedory.org/fleetevents/NC-2015-CapeLookout_regform.php

All owners of both Cape Dory and Robinhood power and sailboats, CDSOA members and non-members, are welcome to attend.

Use NOAA Charts 11552 and 11544, 11545.

Web resources:

Cape Lookout National Seashore (NPS): <http://www.nps.gov/caloindex.htm>

US Harbors - Cape Lookout Bight: <http://nc.usharbors.com/harbor-guide/cape-lookout-bight>

Printable NOAA Booklet Chart Nos. 11552, 11544 and 11545:

http://ocsddata.ncd.noaa.gov/BookletChart/11552_BookletChart.pdf

http://ocsddata.ncd.noaa.gov/BookletChart/11544_BookletChart.pdf

http://ocsddata.ncd.noaa.gov/BookletChart/11545_BookletChart.pdf

Printable NOAA Booklet Charts for the Atlantic Coast:

<http://ocsddata.ncd.noaa.gov/BookletChart/AtlanticCoastBookletCharts.htm>

NOAA Tide Predictions - Cape Lookout Bight:

<http://tidesandcurrents.noaa.gov/noaatidepredictions/NOAATidesFacade.jsp?Stationid=8656841>