



CDSOA Gulf Coast Fleet Offatts Bayou/Moody Gardens Trip

Offatts Bayou

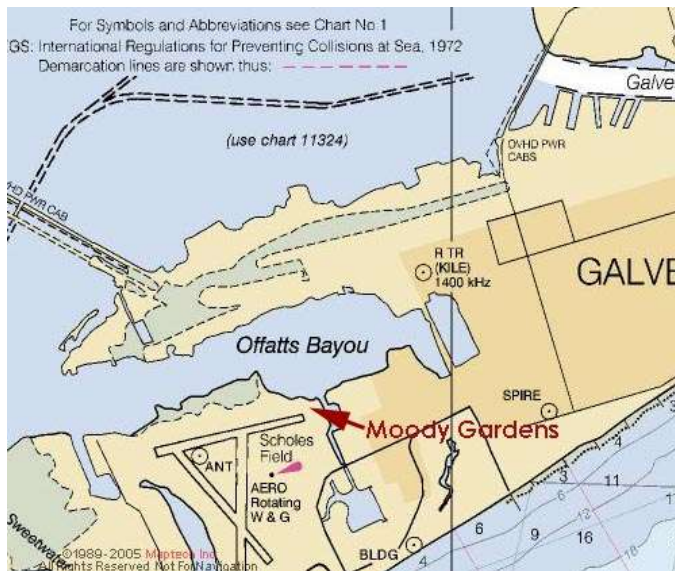
October 29-31, 2010

Questions? Contact Event Organizer **David Lark** Ph: 281-312-9403; davidalark[NOSPAM]@gmail.com
Or Fleet Captain **Janette Alford** Ph 832-794-1147; cd28lyric[NOSPAM]@earthlink.net

What could be better on a cool, crisp fall day than a trip to Offatts Bayou or Moody Gardens for the weekend? One of the few times of the year that you don't usually have to motor down to Galveston! Please join us for what will be a delightful trip to Galveston for Halloween weekend. Some of the fleet will be heading down on Friday and others will be following on Saturday. Please contact our event organizer, David Lark, if you would like to join us and sail as a group on either day. If you would like a slip, please contact Moody Gardens as soon as possible as availability may be limited. As of September 8th, there were still 14 slips available and the rate is \$2.25/ft. Bring your dinghies if you want to go ashore at Moody Gardens or over to the nearby convenience store – or just to visit others in the fleet. There is also complimentary courtesy shuttle service to and from the hotel to the marina.

For those that have not been to Offatts or Moody Gardens, it is a great place with a safe anchorage and a nice, newly built marina. Those that stay at the marina also have pool and bath house privileges at the Moody Gardens resort. For marina or hotel reservations call the Moody Gardens Hotel at (409) 741-8484.

The hotel also offers complimentary shuttle service to The Strand, a quaint shopping district near the cruise terminal and *The Elissa*.



Any questions regarding this event?

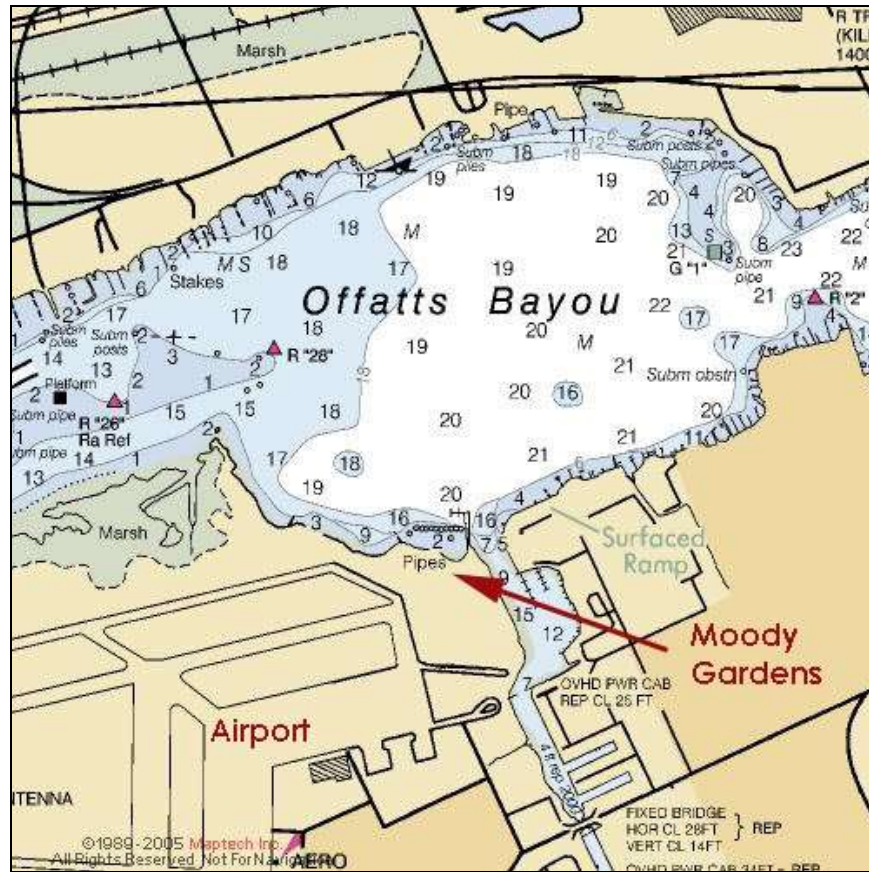
Please contact Event Organizer David Lark at 281-312-9403; or davidalark[NOSPAM]@gmail.com

Don't forget to remove "[NOSPAM]" from email address before clicking on Send.

All owners of both Cape Dory and Robinhood power and sailboats, CDSOA members and non-members, are welcome to attend.

All captains are responsible for their own navigation and the safety of their vessels and crew.

Use NOAA Charts 11324, 11322, 11326.



Not for navigation. Use NOAA Charts # 11324, 11322, 11326.

Web Resources:

Moody Gardens Hotel: <http://www.moodygardenshotel.com/>

Texas Seaport Museum (*Tall Ship Elissa*): http://www.galvestonhistory.org/Texas_Seaport_Museum.asp

The Strand Galveston: <http://www.thestrand.com/>